

**JVC D-ILA Projector Information File---Installation**

This DLA.inf is beta release. Please try using this beta version.

The D-ILA projector which corresponds by the DLA.inf file is as follows.

- ◆ DLA-G150CL PC1
- ◆ DLA-G150CL PC2
- ◆ DLA-SX21 PC1
- ◆ DLA-SX21 PC2

**Windows98 Driver Installation**

[Resolution and frequency]

The following tables are correspondence tables of resolution and frequency restricted by installing a DLA.inf file.

The used graphic card is Tornade GeForce2 MX/MX400 (InnoVISION Multimedia Limited).

Resolution cannot be restricted in this DLA.inf. Since resolution is a setup by the graphic card, it changes with graphic cards by which use is carried out.

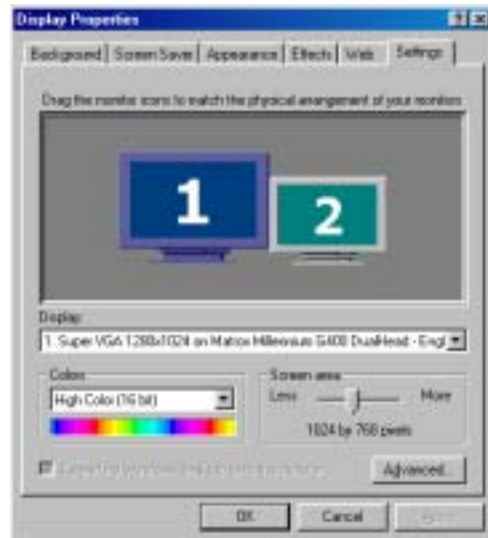
| Model Name                       | Resolution  | H Frequency(kHz) | V Frequency(Hz) |
|----------------------------------|-------------|------------------|-----------------|
| DLA-G150CL PC1<br>DLA-G150CL PC2 | 640 × 480   | 31.4             | 60              |
|                                  | 800 × 600   | 37.9             | 60              |
|                                  | 1024 × 768  | 48.3             | 60              |
|                                  | 1280 × 1024 | 63.9             | 60              |
|                                  | 1600 × 1200 | 74.5             | 60              |
| DLA-SX21 PC1<br>DLA-SX21 PC2     | 640 × 480   | 31.4             | 60              |
|                                  | 800 × 600   | 37.9             | 60              |
|                                  | 1024 × 768  | 48.3             | 60              |
|                                  | 1280 × 1024 | 63.9             | 60              |
|                                  | 1400 × 1050 | 64.0             | 60              |
|                                  | 1600 × 1200 | 74.5             | 60              |

[Preparation]

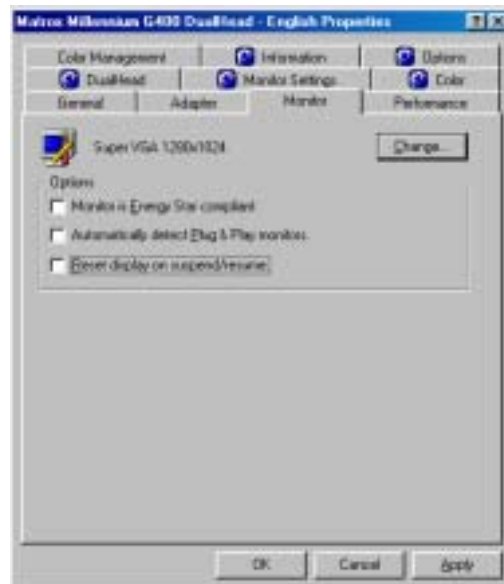
1. Please create the folder newly to PC which installs an information file.
2. File "DLA.inf" is put into the folder created by 1.

[Installing]

1. From the Windows98 desktop, click on [Start] [Settings] [Control Panel].
2. Double click on the [Display] icon.
3. When the [Display Properties] window opens, click on the [Settings] tab. Then click on the [Advanced...].



4. Select the [Monitor] tab, the check will be removed if there are some which are checked on [Options]. Then click on the [Apply].



5. Then click on the [Change...].



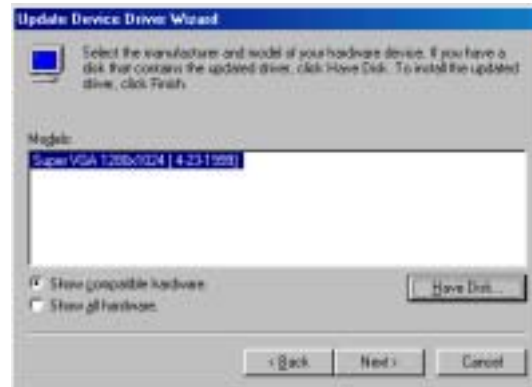
6. When the [Upgrade Device Driver Wizard] window opens, click on the [Next>].



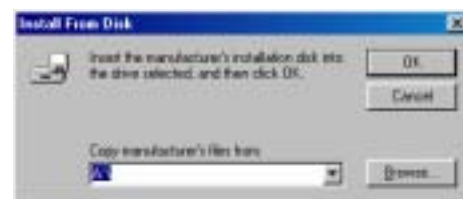
7. Select the [Display a list of all the drivers in a specific location, so you can select the driver you want] option, and then click on the [Next>].



8. Click on the [Have Disk...].



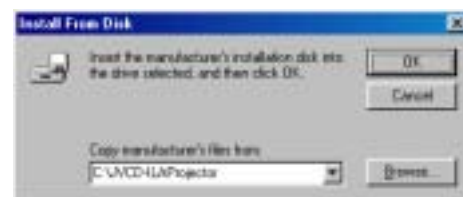
9. When the [Install From Disk] window opens, click on the [Browse...].



10. When the [Open] window opens, specify the folder created by preparation, and then click on the [OK] if [dla.inf] is displayed on [File name:].



11. It checks that the "folder name" specified by 10 is displayed on [Copy manufacturer's files from:], and then click on the [OK].



12. It returns to [Upgrade Device Driver Wizard] window. If the target model name is displayed on [Models:], choose it and then click on the [Next>].



13. Click on the [Next>] to continue.



14. Click on the [Finish] to complete the installation.



15. It is completion if the model name chosen by 12 is displayed as shown in the right figure.



## Windows2000 Driver Installation

[Resolution and frequency]

The following tables are correspondence tables of resolution and frequency restricted by installing a DLA.inf file.

The used graphic card is Tornade GeForce2 MX/MX400 (InnoVISION Multimedia Limited).

Resolution cannot be restricted in this DLA.inf. Since resolution is a setup by the graphic card, it changes with graphic cards by which use is carried out.

| Model Name                       | Resolution  | H Frequency(kHz) | V Frequency(Hz) |
|----------------------------------|-------------|------------------|-----------------|
| DLA-G150CL PC1<br>DLA-G150CL PC2 | 640 × 480   | 31.4             | 60              |
|                                  | 800 × 600   | 37.9             | 60              |
|                                  | 1024 × 768  | 48.3             | 60              |
|                                  | 1280 × 1024 | 63.9             | 60              |
|                                  | 1600 × 1200 | 75.1             | 60              |
| DLA-SX21 PC1<br>DLA-SX21 PC2     | 640 × 480   | 31.4             | 60              |
|                                  | 800 × 600   | 37.9             | 60              |
|                                  | 1024 × 768  | 48.3             | 60              |
|                                  | 1280 × 1024 | 63.9             | 60              |
|                                  | 1400 × 1050 | 64.0             | 60              |
|                                  | 1600 × 1200 | 75.1             | 60              |

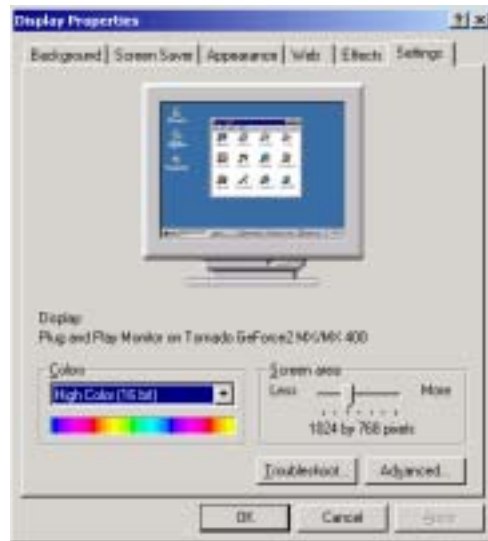
[Preparation]

1. Please create the folder newly to PC which installs an information file.
2. File "DLA.inf" is put into the folder created by 1.

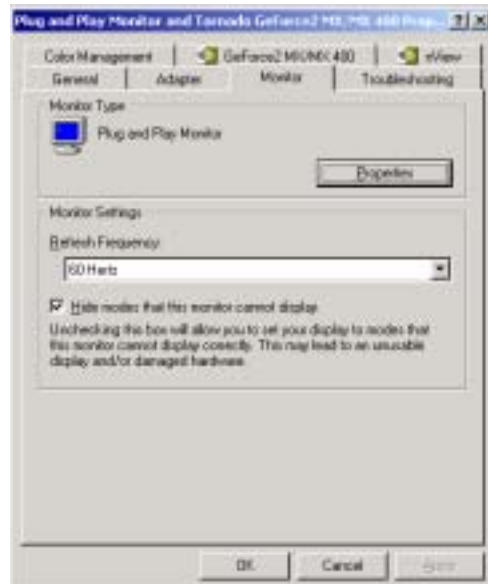
[Installing]

1. From the Windows2000 desktop, click on [Start] [Settings] [Control Panel].
2. Double click on the [Display] icon.

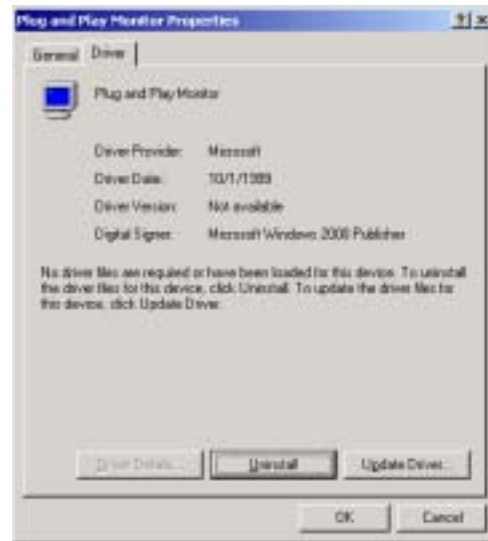
3. When the [Display Properties] window opens, click on the [Settings] tab. Then click on the [Advanced...].



4. Select the [Monitor] tab, and then click on the [Properties].



5. When the [Monitor Properties] window opens, select the [Driver] tab, and then click on the [Update Driver...].



6. When the [Upgrade Device Driver Wizard] window opens, click on the [Next>].



7. When the [Install Hardware Device Drivers] window opens, select the [Display a list of the known drivers for this device so that I can choose a specific driver] option, and then click on the [Next>].



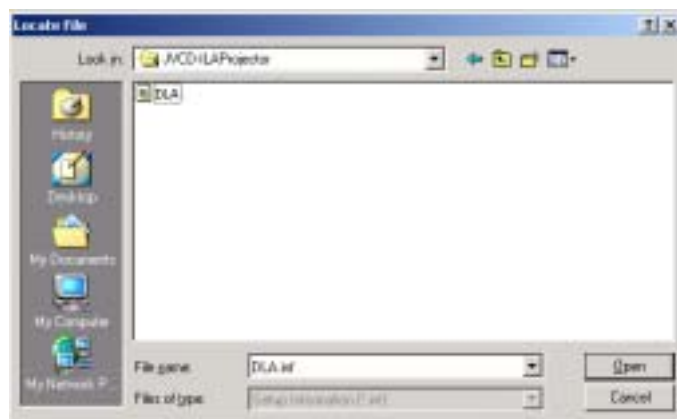
8. When the [Select a Device Driver] window opens, click on the [Have Disk...].



9. When the [Install From Disk] window opens, click on the [Browse...].



10. When the [Locate File] window opens, specify the folder created by preparation, and then click on the [OK] if [dla.inf] is displayed on [File name:].



11. It checks that the "folder name" specified by 10 is displayed on [Copy manufacturer's files from:], and then click on the [OK].



12. It returns to [Upgrade Device Driver Wizard] window. If the target model name is displayed on [Models:], choose it and then click on the [Next>].



13. When the [Start Device Driver Installation] window opens, click on the [Next>].



14. You may safely ignore any admonitions such as [Digital Signature Not Found]. Simply click on the [Yes] to continue.



15. When the [Completing the Upgrade Device Driver Wizard] window opens, click on the [Finish].



16. It is completion if [Monitor Type] is the model name chosen by 12.

