

D-ILA[®] Projector

DLA-SH4K Series

RS232C Control Specifications (General Command)

Ver. 5.0

2008/02/14

Victor Company of Japan, Limited
ILA Center

(*) D-ILA is a trade mark of Victor Company of Japan.

CTGKE-0034

C h a n g e H i s t o r y

Rev	Date	Note
2.7	5-Nov-2007	1st release
5.0	14-Feb-2008	Formal release

C o n t e n t s

1. Outline	6
2. Communication Format	6
3. Data Format	6
3.1. Command Data Format (External Control → Projector)	6
3.2. Tally (Response) Data Format (Projector → External Control)	6
3.2.1. Tally (Response) Data when terminated normally	6
3.2.2. Tally Data when Error Occurs	7
4. Header	8
4.1. External Control → Projector	8
4.2. Projector → External Control	8
5. ID	8
6. CR	9
7. Parameters	9
7.1. Numeric Value Parameter	9
7.1.1. Operating time Parameter	9
7.1.2. Other Parameter	9
7.2. ON/OFF Status Parameter	9
7.3. Special Parameter	10
7.3.1. Back Color Parameter	10
7.3.2. ID Parameter	10
7.3.3. Gamma Table Parameter	10
7.3.4. Lamp Power Parameter	11
7.3.5. Input Level Parameter	11
7.3.6. Display Mode Parameter	11
7.3.7. Test Pattern Parameter	11
7.3.8. Operation State Parameter	12
7.3.9. Error Number	12
7.3.10. DHCP Client Parameter	12
7.3.11. SMTP AUTH Type Parameter	12
7.3.12. SMTP Server Port Parameter	13
7.3.13. Mail Status	13
8. Tally (Response) Data	14
8.1. Tally (Response) Data Status	14
8.1.1. Normal Termination Status	14
8.1.2. Status when error occurs (Error status)	14
8.2. Tally (Response) Data Parameter	14
9. Projector Operation States	14
9.1. Standby State	14
9.2. Power on State	14
9.3. Cool-down State	14
9.4. Emergency Cool-down state	14
9.5. Emergency State	14
9.6. OS Boot state	14
10. Command	14
10.1. Hide : 'U00' (55H 30H 30H)	14
10.2. Back Color : 'U01' (55H 30H 31H)	14
10.3. Power : 'U0F' (55H 30H 46H)	14
10.4. Zoom Wide : 'U13' (55H 31H 33H)	14
10.5. Zoom Tele : 'U14' (55H 31H 34H)	14

10.6.	Focus + : 'U15' (55H 31H 35H).....	14
10.7.	Focus - : 'U16' (55H 31H 36H)	14
10.8.	Flip Horz. : 'U17' (55H 31H 37H).....	14
10.9.	Flip Vert. : 'U18' (55H 31H 38H).....	14
10.10.	Lamp Time : 'U1C' (55H 31H 43H).....	14
10.11.	ID : 'U1D' (55H 31H 44H)	14
10.12.	Lens Shift Left : 'U32' (55H 33H 32H)	14
10.13.	Lens Shift Right : 'U33' (55H 33H 33H).....	14
10.14.	Lens Shift Up : 'U34' (55H 33H 34H)	14
10.15.	Lens Shift Down : 'U35' (55H 33H 35H)	14
10.16.	Brightness Red : 'U55' (55H 35H 35H).....	14
10.17.	Brightness Green : 'U56' (55H 35H 36H)	14
10.18.	Brightness Blue : 'U57' (55H 35H 37H).....	14
10.19.	Contrast Red : 'U58' (55H 35H 38H).....	14
10.20.	Contrast Green : 'U59' (55H 35H 39H).....	14
10.21.	Contrast Blue : 'U5A' (55H 35H 41H)	14
10.22.	Gamma Table : 'U73' (55H 37H 33H).....	14
10.23.	Lamp Power : 'U7E' (55H 37H 47H).....	14
10.24.	Input Level : 'U82' (55H 38H 32H).....	14
10.25.	Display Mode : 'U8A' (55H 38H 41H)	14
10.26.	Message Display : 'U8C' (55H 38H 43H)	14
10.27.	Test Pattern : 'U8D' (55H 38H 44H).....	14
10.28.	Operation State : 'UA0' (55H 41H 30H).....	14
10.29.	Model Status : 'UA1' (55H 41H 31H)	14
10.30.	Temperature : 'UA2' (55H 41H 32H).....	14
10.31.	Lens Shift Status : 'UA4' (55H 41H 34H).....	14
10.32.	Latest Error : 'UA5' (55H 41H 35H)	14
10.33.	DVI-1 Horz. Resolution : 'UB0' (55H 42H 30H).....	14
10.34.	DVI-1 Vert. Resolution : 'UB1' (55H 42H 31H)	14
10.35.	DVI-2 Horz. Resolution : 'UB2' (55H 42H 32H).....	14
10.36.	DVI-2 Vert. Resolution : 'UB3' (55H 42H 33H)	14
10.37.	DVI-3 Horz. Resolution : 'UB4' (55H 42H 34H).....	14
10.38.	DVI-3 Vert. Resolution : 'UB5' (55H 42H 35H).....	14
10.39.	DVI-4 Horz. Resolution : 'UB6' (55H 42H 36H).....	14
10.40.	DVI-4 Vert. Resolution : 'UB7' (55H 42H 37H).....	14
10.41.	DVI-1 Frame Rate : 'UB8' (55H 42H 38H).....	14
10.42.	DVI-2 Frame Rate : 'UB9' (55H 42H 39H).....	14
10.43.	DVI-3 Frame Rate : 'UBA' (55H 42H 41H).....	14
10.44.	DVI-4 Frame Rate : 'UBB' (55H 42H 42H)	14
10.45.	DHCP Client : 'UD2' (55H 44H 32H).....	14
10.46.	IP Address : 'UD3' (55H 44H 33H)	14
10.47.	Subnet Mask : 'UD4' (55H 44H 34H)	14
10.48.	Default Gateway : 'UD5' (55H 44H 35H).....	14
10.49.	Host Name : 'UD6' (55H 44H 36H).....	14
10.50.	MAC Address : 'UD7' (55H 44H 37H).....	14
10.51.	E-mail : 'UD8' (55H 44H 38H).....	14
10.52.	E-mail Address : 'UD9' (55H 44H 39H).....	14
10.53.	SMTP Server Address : 'UDA' (55H 44H 41H).....	14
10.54.	Network Restart : 'UDC' (55H 44H 43H)	14
10.55.	E-mail Sender : 'UDD' (55H 44H 44H)	14

10.56.	Conver. H Red + : 'UE0' (55H 45H 30H).....	14
10.57.	Conver. H Red - : 'UE1' (55H 45H 31H).....	14
10.58.	Conver. VR Red + : 'UE2' (55H 45H 32H).....	14
10.59.	Conver. VR Red - : 'UE3' (55H 45H 33H).....	14
10.60.	Conver. VL Red + : 'UE4' (55H 45H 34H).....	14
10.61.	Conver. VL Red - : 'UE5' (55H 45H 35H).....	14
10.62.	Conver. H Blue + : 'UE6' (55H 45H 36H).....	14
10.63.	Conver. H Blue - : 'UE7' (55H 45H 37H).....	14
10.64.	Conver. VR Blue + : 'UE8' (55H 45H 38H).....	14
10.65.	Conver. VR Blue - : 'UE9' (55H 45H 39H).....	14
10.66.	Conver. VL Blue + : 'UEA' (55H 45H 41H).....	14
10.67.	Conver. VL Blue - : 'UEB' (55H 45H 42H).....	14
10.68.	SMTP AUTH Type : 'UF6' (55H 46H 36H).....	14
10.69.	SMTP Server Account : 'UF7' (55H 46H 37H).....	14
10.70.	SMTP Server Password : 'UF8' (55H 46H 38H).....	14
10.71.	SMTP Server Port : 'UF9' (55H 46H 39H).....	14
10.72.	Send Test Mail : 'UFA' (55H 46H 41H).....	14
10.73.	Confirm : 'N' (4EH).....	14
11.	Appendix.....	14
11.1.	External Control Command List.....	14
11.2.	Operating state Sequence.....	14
11.3.	Power on Sequence.....	14
11.4.	Power off Sequence.....	14

1. Outline

This document describes the communication and data formats used to control the projector via its RS-232C port.

2. Communication Format

Transfer Rate	: 19200 bps only
Data Length	: 8 bits
Parity Bit	: None
Stop Bit	: 1 bit
Flow Control	: None

3. Data Format

3.1. Command Data Format (External Control → Projector)

Header ID SP Command SP Parameter SP Parameter SP ... CR

Header: Indicates the beginning of data and data type

'!' (21H) : Command for the Projector

'?' (3FH) : Query to the Projector (Request for data)

ID : Identification number of Projector

SP : Indicates the separation between ID and command, command and parameter, parameter and parameter (20H)

CR : Indicates the end of data (0DH)

3.2. Tally (Response) Data Format (Projector → External Control)

3.2.1. Tally (Response) Data when terminated normally

Header ID SP Normal Termination Status SP Parameter SP Parameter SP ... CR

Header: Indicates the beginning of tally (response) data

'@' (40H)

ID: Identification number of the Projector

SP: Indicates the separation between ID and Normal Termination status, Normal Termination Status and parameter, parameter and parameter (20H)

Normal Termination Status: '0' (30H)

CR: Indicates the end of data (0DH)

(*) Parameter is sent when tally (response) data is issued in response to a query (request for data.)

There is no parameter for tally (response) data in response to a command.

3.2.2. Tally Data when Error Occurs

Header ID SP Error Status CR

Header: Indicates the beginning of the tally (response) data

'@'(40H)

ID: Identification number of Projector

SP: Indicates the separation between ID and Status (20H)

Error Status:

'A00'(41H 30H 30H)

'A01'(41H 30H 31H)

'A02'(41H 30H 32H)

'A03'(41H 30H 33H)

'A04'(41H 30H 34H)

'A05'(41H 30H 35H)

'A06'(41H 30H 36H)

'A90'(41H 39H 30H)

'AA4'(41H 41H 34H)

CR: Indicates the end of the data (0DH)

(*) For details on error status, refer to 8. Tally (Response) Data.

4. Header

Indicates the beginning and type of communication data.

4.1. External Control → Projector

Character	Hex	Definition
'!	21	Command to the Projector
'?'	3F	Query (request for information) to the Projector

4.2. Projector → External Control

Character	Hex	Definition
'@'	40	Tally (Response) data

5. ID

Numeric characters are used to identify an individual Projector when two or more Projector units are connected to a single control machine.

Setting separate identification numbers for each Projector allows independent control of each Projector unit.

Assignable ID numbers

ID	Character (Hex)
0	'0'(30H)
1	'1'(31H)
2	'2'(32H)
3	'3'(33H)
4	'4'(34H)
5	'5'(35H)
6	'6'(36H)
7	'7'(37H)

ID	Character (Hex)
8	'8'(38H)
9	'9'(39H)
10	'A'(41H) or 'a'(61H)
11	'B'(42H) or 'b'(62H)
12	'C'(43H) or 'c'(63H)
13	'D'(44H) or 'd'(64H)
14	'E'(45H) or 'e'(65H)
15	'F'(46H) or 'f'(66H)

(*) Factory set ID is '1' (31H).

ID number '0' (30H) should be used when assigning all connected Projector units for batch operations. This means that when assigning independent ID numbers to multiple units, 15 of the 16 assignable numbers (from '1' through 'F') can actually be used for registration.

Please note that tally (response) data is not returned from the projector when the global ID assignment function (0) is used.

6. CR

Indicates the end of each of data. (0DH)

7. Parameters

There are four types of parameters:

1. Indicates the numeric value.
2. Indicates the ON/OFF status.
3. Special parameter.

7.1. Numeric Value Parameter

7.1.1. Operating time Parameter

Unsigned 3-byte hexadecimal code represented by 6 (byte) characters.

The unit is 'Minute' and assignable range is between '000000' and 'FFFFFF'.

Ex-1)

The parameter indicating '1200 hours':

Since '1200x60=72000' (decimal) is represented as '011940' in signed 3-byte hexadecimal, its parameter is: '011940' (30H 31H 31H 39H 34H 30H)

7.1.2. Other Parameter

Signed 2-byte hexadecimal code represented by 4 (byte) characters.

Assignable range is between '8000' and '7FFF'.

Ex-1)

The parameter indicating '20' (decimal):

Since '20' (decimal) is represented as '0014' in signed 2-byte hexadecimal, its parameter is: '0014'(30H 30H 31H 34H)

Ex-2)

The parameter to indicate '-2' (decimal):

Since '-2' (decimal) is represented as 'FFFE' in signed 2-byte hexadecimal, its parameter is: 'FFFE'(46H 46H 46H 45H)

7.2. ON/OFF Status Parameter

Indicates the ON/OFF status of items such as POWER or HIDE.

Character	Hex	Definition
'0'	30	OFF
'1'	31	ON

7.3. Special Parameter

Parameters other than those described in 7.1 to 7.2.

7.3.1. Back Color Parameter

Character	Hex	Description
'0'	30	Blue
'1'	31	Black

7.3.2. ID Parameter

Character	Hex	Definition
'0'	30	ID 0(global command for all projectors)
'1'	31	ID 1
'2'	32	ID 2
'3'	33	ID 3
'4'	34	ID 4
'5'	35	ID 5
'6'	36	ID 6
'7'	37	ID 7
'8'	38	ID 8
'9'	39	ID 9
'A'	41	ID 10
'B'	42	ID 11
'C'	43	ID 12
'D'	44	ID 13
'E'	45	ID 14
'F'	46	ID 15
'a'	61	ID 10
'b'	62	ID 11
'c'	63	ID 12
'd'	64	ID 13
'e'	65	ID 14
'f'	66	ID 15

7.3.3. Gamma Table Parameter

Character	Hex	Definition
'0'	30	A
'1'	31	B
'2'	32	C

7.3.4. Lamp Power Parameter

Character	Hex	Definition
'0'	30	100%
'1'	31	97%
'2'	32	94%
'3'	33	91%
'4'	34	89%
'5'	35	86%
'6'	36	83%
'7'	37	80%

7.3.5. Input Level Parameter

Character	Hex	Definition
'0'	30	Standard (0 ~ 255)
'1'	31	Enhanced (16 ~ 235)

7.3.6. Display Mode Parameter

Character	Hex	Definition
'0'	30	Don't Care
'1'	31	Single
'2'	32	Double
'3'	33	Cross

7.3.7. Test Pattern Parameter

Character	Hex	Definition
'0'	30	OFF
'1'	31	Color Bars
'2'	32	Color Cross Hatch
'3'	33	Cross Hatch
'4'	34	Staircase
'5'	35	Lamp
'6'	36	Flat

7.3.8. Operation State Parameter

Character	Hex	Definition
'0'	30	Standby state
'1'	31	Power on State
'2'	32	Cool-down state
'3'	33	Emergency Cool-down state
'4'	34	Emergency state

7.3.9. Error Number

Character	Hex	Definition
'00'	30 30	No error.
'01'	30 31	The lamp does not turn on.
'02'	30 32	Accumulated lamp time has exceeded 1500 hours.
'06'	30 36	The lamp goes off during projection.
'08'	30 38	Abnormal temperature in the projector.
'09'	30 39	Abnormal temperature around the intake vent.
'0A'	30 41	Abnormal temperature around the exhaust vent.
'15'	31 35	The lamp cover is open.
'30'	33 30	Trouble with CPU circuit board.
'31'	33 31	Trouble with MAIN circuit board.
'32'	33 32	Trouble with DD-RB circuit board.
'33'	33 33	Trouble with DD-G circuit board.
'40'	34 30	FAN1 (the cooling fan for DD) has stopped.
'41'	34 31	FAN2 (the cooling fan for the lamp) has stopped.
'42'	34 32	FAN3 (the cooling fan for over all exhaust) has stopped.
'43'	34 33	FAN4 (the cooling fan for the MAIN circuit board) has stopped.
'44'	34 34	FAN5 (the cooling fan for the lighting system (PCS) has stopped.
'45'	34 35	RESERVED
'46'	34 36	FAN7 (the cooling fan for the device) has stopped.
'47'	34 37	FAN8 (the cooling fan for the power supply of the lamp) has stopped.
'48'	34 38	RESERVED
'49'	34 39	FAN10 (the cooling fan for DD) has stopped.
'4A'	34 41	FAN11 (the cooling fan for DD) has stopped.
'4B'	34 42	RESERVED

7.3.10. DHCP Client Parameter

Character	Hex	Definition
'0'	30	DHCP
'1'	31	Static IP

7.3.11. SMTP AUTH Type Parameter

Character	Hex	Definition
'0'	30	OFF
'1'	31	PLAIN
'2'	32	LOGIN
'3'	33	CRAM-MD5

7.3.12. SMTP Server Port Parameter

Character	Hex	Definition
'0'	30	25
'1'	31	465
'2'	32	587

7.3.13. Mail Status

Character	Hex	Definition
'0'	30	E-mail transmission successful
'1'	31	E-mail in transit
'2'	32	E-mail transmitting function OFF
'3'	33	Internal Mailing process error
'4'	34	Fail to acquire Mail subject
'5'	35	SMTP Authentication error (Server does not support SMTP-AUTH.)
'6'	36	SMTP Authentication error (User authentication failure)
'7'	37	Communication initialization error
'8'	38	Communication processing error
'9'	39	Communication protocol error

8. Tally (Response) Data

The Projector will only accept and process data when the ID number included with the data coincides with the ID number registered to the Projector itself. (Except when ID = '0') If the received ID number matches the Projector's ID, it will return a response to the query from the external control unit. This response data is called "Tally (Response) Data".

(However, when ID = '0', tally (response) data is not replied.)

After transmitting data, the external control unit cannot transmit subsequent data until the Tally (Response) Data is received.

However, if Tally (Response) Data is not returned within 3 seconds after transmitting the data, data transmission can be retried.

8.1. Tally (Response) Data Status

8.1.1. Normal Termination Status

Character	Hex	Definition
'0'	30	Command received and processing terminated

8.1.2. Status when error occurs (Error status)

Character	Hex	Correspondence	Definition
'A00'	41 30 30	ALL	Command not supported
'A01'	41 30 31	ALL	Invalid parameter
'A02'	41 30 32	ALL	Parameter value exceeds operation range
'A03'	41 30 33	ALL	Unclassified error
'A04'	41 30 34	ALL	Unacceptable command in current state or Unacceptable command with current setting
'A05'	41 30 35	ALL	RESERVED
'A06'	41 30 36	ALL	Command in process
'A90'	41 39 30	UDC	Cannot connect to the network
'AA4'	41 41 34	UF9 (query)	Acquired an invalid number

8.2. Tally (Response) Data Parameter

The Tally (Response) Data Parameter is returned when the Tally (Response) Data is issued in response to a query (request for data). No parameter is returned when Tally (Response) Data issued in response to a command or when an error occurs.

9. Projector Operation States

This section describes the Projector's six operation states.

9.1. Standby State

The lamp does not light and the fan does not operate.

The Projector enters the Power on State when Power on command is received.

9.2. Power on State

The lamp lights and the fan start rotating. Images can be projected in this state.

The Projector enters the Cool-down State when the Power off command is received.

The Projector enters the Emergency Cool-down state when Emergency is detected.

9.3. Cool-down State

Lamp goes out but the fan continues to rotate. The Projector enters the Standby State after 180 sec.

The projector does not enter the Power on State if the Power on command is received at this state.

9.4. Emergency Cool-down state

The lamp goes out but the fan continues to rotate. The Projector enters the Emergency State after 180 sec.

The projector does not enter the Power on State if the Power on command is received at this state.

9.5. Emergency State

The lamp goes out and the fan stops.

The projector does not enter the Power on State if the Power on command is received at this state.

9.6. OS Boot state

The lamp goes out and the fan stops.

The Projector enters this state when it is plugged into an AC outlet and the Main Power switch is turned on.

The Projector enters the Standby state after OS starts.

(*) The Projector does not respond to any command at this state.

Note that the acceptance/non-acceptance condition of a command differs depending on the operation state.

10. Command

This section describes the commands that can be used with the Projector.

- In the Communication Examples, the ID number registered on the Projector is represented as '1' (31H). This is the default setting.
- "CTLR" refers to transmissions from the external control unit and "DLA" refers to transmissions (Tally (Response) Data) from the Projector.
- "Response time" refers to the maximum time required between command reception and return of Tally (Response) Data. In other words, it refers to the maximum time that the external control unit must wait for the Tally (Response) Data.
- For details on the different parameters, refer to 7. Parameters.
- Acceptance or non-acceptance of a command in each operation state is indicated by "✓" (accept) or "N/A" (does not accept).

10.1. Hide : 'U00' (55H 30H 30H)

Definition : Controls video signal muting

Parameter type : ON / OFF

Response time : 3 seconds

Conditions :

Operation state

Standby state	Power on State	Cool-down state Emergency Cool-down state Emergency state
N/A	✓	N/A

Communication Examples

◇ To turn Hide ON

CTLR '!' '1' SP 'U00' SP '1' CR

DLA '@' '1' SP '0' CR

◇ When requesting current HIDE status (if HIDE status is ON)

CTLR '?' '1' SP 'U00' CR

DLA '@' '1' SP '0' SP '1' CR

◇ When trying to change HIDE status in emergency state (turn ON)

CTLR '!' '1' SP 'U00' SP '1' CR

DLA '@' '1' SP 'A04' CR

10.2. Back Color : 'U01' (55H 30H 31H)
--

Definition : Controls the background color projected when Source (Area) has no signal

Parameter type : Special parameter (Refer to 7.3.1 Back Color Parameter.)

Response time : 3 seconds

Conditions :

Operation state

Standby state	Power on State	Cool-down state Emergency Cool-down state Emergency state
N/A	✓	N/A

Communication Examples

◇ To specify "blue" as the background color

CTLR '!' '1' SP 'U01' SP '1' CR

DLA '@' '1' SP '0' CR

◇ When requesting background color data (if background color is set to blue)

CTLR '?' '1' SP 'U01' CR

DLA '@' '1' SP '0' SP '0' CR

10.3. Power	:	'U0F' (55H 30H 46H)
--------------------	----------	----------------------------

Definition : Controls the power

Parameter type : ON / OFF

Response time : 3 seconds

Conditions : No query

Operation state

- When setting Power (ON)

Standby state	Power on State	Cool-down state Emergency Cool-down state Emergency state
✓	N/A	N/A

- When setting Power (OFF)

Standby state	Power on State	Cool-down state Emergency Cool-down state Emergency state
N/A	✓	N/A

Communication Examples

- ◇ When turning the Projector's power on

CTLR '!' '1' SP 'U0F' SP '1' CR

DLA

'@' '1' SP '0' CR

Power on Process

When the POWER ON command is received, the Projector returns the Tally (Response) Data before completing all the Power on processing operations (lighting lamp, rotating fan, transmitting data, etc.). These operations can take up to a maximum of about 60 seconds (if it takes the lamp a long time to light up or retries are occurs because of an internal error).

If a command is issued in the Power on process, Error (A06) occurs.

Refer to 11.3 Power on Sequence about the sequence of Power on.

Power off Process

When the POWER OFF command is received, the Projector enters the cool-down state to allow the lamp to cool (for about 180 seconds).

After cool-down state is completed, the Projector automatically enters the stand-by state.

For operation states, refer to 10. Projector Operation States.

10.4. Zoom Wide : 'U13' (55H 31H 33H)

Definition : Enlarges the screen size

Parameter type : ON / OFF

Response time : 3 seconds

Conditions : No query

Operation state

Standby state	Power on State	Cool-down state Emergency Cool-down state Emergency state
N/A	✓	N/A

Communication Examples

◇ Be sure to transmit the STOP (OFF) command after transmitting the START (ON) command.

CTLR '!' '1' SP 'U13' SP '1' CR

DLA '@' '1' SP '0' CR

CTLR '!' '1' SP 'U13' SP '0' CR

DLA '@' '1' SP '0' CR

10.5. Zoom Tele	:	'U14' (55H 31H 34H)
-----------------	---	---------------------

Definition : Reduces the screen size

Parameter type : ON / OFF

Response time : 3 seconds

Conditions : No query

Operation state

Standby state	Power on State	Cool-down state Emergency Cool-down state Emergency state
N/A	✓	N/A

Communication Examples

◇ Be sure to transmit the STOP (OFF) command after transmitting the START (ON) command.

CTLR '!' '1' SP 'U14' SP '1' CR

DLA '@' '1' SP '0' CR

CTLR '!' '1' SP 'U14' SP '0' CR

DLA '@' '1' SP '0' CR

10.6. Focus + : 'U15' (55H 31H 35H)

Definition : Moves the focal point forward

Parameter type : ON / OFF

Response time : 3 seconds

Conditions : No query

Operation state

Standby state	Power on State	Cool-down state Emergency Cool-down state Emergency state
N/A	✓	N/A

Communication Examples

◇ Be sure to transmit the STOP command after transmitting the START command.

CTLR '!' '1' SP 'U15' SP '1' CR

DLA '@' '1' SP '0' CR

CTLR '!' '1' SP 'U15' SP '0' CR

DLA '@' '1' SP '0' CR

10.7. Focus -	:	'U16' (55H 31H 36H)
---------------	---	---------------------

Definition : Moves the focal point back

Parameter type : ON / OFF

Response time : 3 seconds

Conditions : No query

Operation state

Standby state	Power on State	Cool-down state Emergency Cool-down state Emergency state
N/A	✓	N/A

Communication Examples

◇ Be sure to transmit the STOP command after transmitting the START command.

CTLR '!' '1' SP 'U16' SP '1' CR

DLA '@' '1' SP '0' CR

CTLR '!' '1' SP 'U16' SP '0' CR

DLA '@' '1' SP '0' CR

10.8. Flip Horz.	:	'U17' (55H 31H 37H)
------------------	---	---------------------

Definition : Reverses the image horizontally

Parameter type : ON / OFF

Response time : 20 seconds

Conditions :

Operation state

Standby state	Power on State	Cool-down state Emergency Cool-down state Emergency state
N/A	✓	N/A

Communication Examples

◇ When reversing the image horizontally (Right /Left reverse)

CTLR '!' '1' SP 'U17' SP '1' CR

DLA '@' '1' SP '0' CR

◇ When requesting the current R/L reverse setting (if the image is not reversed horizontally)

CTLR '?' '1' SP 'U17' CR

DLA '@' '1' SP '0' SP '0' CR

10.9. Flip Vert.	:	'U18' (55H 31H 38H)
------------------	---	---------------------

Definition : Reverses the image vertically

Parameter type : ON / OFF

Response time : 20 seconds

Conditions :

Operation state

Standby state	Power on State	Cool-down state Emergency Cool-down state Emergency state
N/A	✓	N/A

Communication Examples

◇ When reversing the image vertically (Top/Bottom reverse)

CTLR '!' '1' SP 'U18' SP '1' CR

DLA '@' '1' SP '0' CR

◇ When requesting the current Top/Bottom invert setting (if the image is not reversed vertically)

CTLR '?' '1' SP 'U18' CR

DLA '@' '1' SP '0' SP '0' CR

10.10. Lamp Time : 'U1C' (55H 31H 43H)

Definition : Sets the lamp operating time

Parameter type : (*)

Response time : 3 seconds

Conditions : Query only

Operation state

Standby state	Power on State	Cool-down state Emergency Cool-down state Emergency state
✓	N/A	N/A

Data Format

◇ Setting data format

'!' '1' SP 'U1C' SP Parameter 1 CR

◇ Tally (Response) data format when requesting current time

'@' '1' SP Normal Termination Status SP Parameter 1 SP Parameter 2 CR

(*) Parameter 1:

The Projector has an incremental counter which counts in one minute increments.
Parameter 1 shows this counter value. The parameter type is "numeric".

(*) Parameter 2:

Parameter 2 shows whether the lamp replacement time is close or not, based on the following calculation:

$$(\text{Lamp service life} - 100 \text{ hours}) \leq \text{Lamp operating time} < \text{Lamp service life}$$

Character	Hex	Definition
'0'	30	Lamp replacement time not close
'1'	31	Lamp replacement time close
'2'	32	Lamp life exceeded

Communication Examples

◇ When setting a lamp operating time (To set the Lamp Time 0 hour means to reset.)

CTLR '!' '1' SP 'U1C' SP '000000' CR

DLA '@' '1' SP '0' CR

10.11. ID : 'U1D' (55H 31H 44H)

Definition : Sets the ID for the Projector

Parameter type : Special Parameter (Refer to 7.3.2 ID Parameter.)

Response time : 3seconds

Conditions :

Operation state

Standby state	Power on State	Cool-down state Emergency Cool-down state Emergency state
✓	✓	✓

(*) When this command is received processed correctly, the Tally (Response) Data is returned with the changed ID number.

Communication Examples

◇ When changing the ID to '7' from the current setting of '1'

CTLR '! '1' SP 'U1D' SP '7' CR

DLA

'@' '7' SP '0' CR



Tally (Response) data is returned with specified ID no.

◇ When requesting the current ID (if the ID setting is '3')

CTLR '? '3' SP 'U1D' CR

DLA

'@' '3' SP '0' SP '3' CR

10.12. Lens Shift Left	:	'U32' (55H 33H 32H)
------------------------	---	---------------------

Definition : Shifts the projection lens to the left

Parameter type : ON / OFF

Response time : 3 seconds

Conditions : No query

Operation state

Standby state	Power on State	Cool-down state Emergency Cool-down state Emergency state
N/A	✓	N/A

Communication Examples

◇ Be sure to transmit the STOP (OFF) command after transmitting the START (ON) command.

CTLR '!' '1' SP 'U32' SP '1' CR

DLA '@' '1' SP '0' CR

CTLR '!' '1' SP 'U32' SP '0' CR

DLA '@' '1' SP '0' CR

10.13. Lens Shift Right : 'U33' (55H 33H 33H)

Definition : Shifts the projection lens to the right

Parameter type : ON / OFF

Response time : 3 seconds

Conditions : No query

Operation state

Standby state	Power on State	Cool-down state Emergency Cool-down state Emergency state
N/A	✓	N/A

Communication Examples

◇ Be sure to transmit the STOP (OFF) command after transmitting the START (ON) command.

CTLR '!' '1' SP 'U33' SP '1' CR

DLA '@' '1' SP '0' CR

CTLR '!' '1' SP 'U33' SP '0' CR

DLA '@' '1' SP '0' CR

10.14. Lens Shift Up	:	'U34' (55H 33H 34H)
----------------------	---	---------------------

Definition : Shifts the projection lens upward

Parameter type : ON / OFF

Response time : 3 seconds

Conditions : No query

Operation state

Standby state	Power on State	Cool-down state Emergency Cool-down state Emergency state
N/A	✓	N/A

Communication Examples

◇ Be sure to transmit the STOP (OFF) command after transmitting the START (ON) command.

CTLR '!' '1' SP 'U34' SP '1' CR

DLA '@' '1' SP '0' CR

CTLR '!' '1' SP 'U34' SP '0' CR

DLA '@' '1' SP '0' CR

10.15. Lens Shift Down	:	'U35' (55H 33H 35H)
------------------------	---	---------------------

Definition : Shifts the projection lens downward

Parameter type : ON / OFF

Response time : 3 seconds

Conditions : No query

Operation state

Standby state	Power on State	Cool-down state Emergency Cool-down state Emergency state
N/A	✓	N/A

Communication Examples

◇ Be sure to transmit the STOP (OFF) command after transmitting the START (ON) command.

CTLR '!' '1' SP 'U35' SP '1' CR

DLA '@' '1' SP '0' CR

CTLR '!' '1' SP 'U35' SP '0' CR

DLA '@' '1' SP '0' CR

10.16. Brightness Red : 'U55' (55H 35H 35H)

Definition : Adjusts the brightness (Red)

Parameter type : Numeric (-30 ~ +30)

Response time : 3 seconds

Conditions :

Operation state

Standby state	Power on State	Cool-down state Emergency Cool-down state Emergency state
N/A	✓	N/A

Communication Examples

◇ When specifying "15" (decimal) as the Brightness Red adjust level

CTLR '!' '1' SP 'U55' SP '000F' CR

DLA '@' '1' SP '0' CR

◇ When requesting current Brightness Red adjust level data (if brightness adjust level is set to "-2" (decimal))

CTLR '?' '1' SP 'U55' CR

DLA '@' '1' SP '0' SP 'FFFE' CR

10.17. Brightness Green : 'U56' (55H 35H 36H)

Definition : Adjusts the brightness (Green)

Parameter type : Numeric (-30 ~ +30)

Response time : 3 seconds

Conditions :

Operation state

Standby state	Power on State	Cool-down state Emergency Cool-down state Emergency state
N/A	✓	N/A

Communication Examples

◇ When specifying "15" (decimal) as the Brightness Green adjust level

CTLR '!' '1' SP 'U56' SP '000F' CR

DLA '@' '1' SP '0' CR

◇ When requesting current Brightness Green adjust level data (if brightness adjust level is set to "-2" (decimal))

CTLR '?' '1' SP 'U56' CR

DLA '@' '1' SP '0' SP 'FFFE' CR

10.18. Brightness Blue : 'U57' (55H 35H 37H)
--

Definition : Adjusts the brightness (Blue)

Parameter type : Numeric (-30 ~ +30)

Response time : 3 seconds

Conditions :

Operation state

Standby state	Power on State	Cool-down state Emergency Cool-down state Emergency state
N/A	✓	N/A

Communication Examples

◇ When specifying "15" (decimal) as the Brightness Blue adjust level

CTLR '!' '1' SP 'U57' SP '000F' CR

DLA '@' '1' SP '0' CR

◇ When requesting current Brightness Blue adjust level data (if brightness adjust level is set to "-2" (decimal))

CTLR '?' '1' SP 'U57' CR

DLA '@' '1' SP '0' SP '01FF' CR

10.19. Contrast Red	:	'U58' (55H 35H 38H)
---------------------	---	---------------------

Definition : Adjusts the contrast (Red)

Parameter type : Numeric (-30 ~ +30)

Response time : 3 seconds

Conditions :

Operation state

Standby state	Power on State	Cool-down state Emergency Cool-down state Emergency state
N/A	✓	N/A

Communication Examples

◇ When specifying "20" (decimal) as the Contrast Red adjust level

CTLR '!' '1' SP 'U58' SP '0014' CR

DLA '@' '1' SP '0' CR

◇ When requesting current Contrast Red adjust level data (if brightness adjust level is set to "-30" (decimal))

CTLR '?' '1' SP 'U58' CR

DLA '@' '1' SP '0' SP 'FFE2' CR

10.20. Contrast Green : 'U59' (55H 35H 39H)

Definition : Adjusts the contrast (Green)

Parameter type : Numeric (-30 ~ +30)

Response time : 3 seconds

Conditions :

Operation state

Standby state	Power on State	Cool-down state Emergency Cool-down state Emergency state
N/A	✓	N/A

Communication Examples

◇ When specifying "20" (decimal) as the Contrast Green adjust level

CTLR '!' '1' SP 'U59' SP '0014' CR

DLA '@' '1' SP '0' CR

◇ When requesting current Contrast Green adjust level data (if brightness adjust level is set to "-30" (decimal))

CTLR '?' '1' SP 'U59' CR

DLA '@' '1' SP '0' SP 'FFE2' CR

10.21. Contrast Blue	:	'U5A' (55H 35H 41H)
----------------------	---	---------------------

Definition : Adjusts the contrast (Blue)

Parameter type : Numeric (-30 ~ +30)

Response time : 3 seconds

Conditions :

Operation state

Standby state	Power on State	Cool-down state Emergency Cool-down state Emergency state
N/A	✓	N/A

Communication Examples

◇ When specifying "20" (decimal) as the Contrast Blue adjust level

CTLR '!' '1' SP 'U5A' SP '0014' CR

DLA '@' '1' SP '0' CR

◇ When requesting current Contrast Blue adjust level data (if brightness adjust level is set to "-30" (decimal))

CTLR '?' '1' SP 'U5A' CR

DLA '@' '1' SP '0' SP 'FFE2' CR

10.22. Gamma Table	:	‘U73’ (55H 37H 33H)
--------------------	---	---------------------

Definition : Selects the gamma table

Parameter type : Special Parameter (7.3.3 Gamma Table Parameter.)

Response time : 3 seconds

Conditions :

Operation state

Standby state	Power on State	Cool-down state Emergency Cool-down state Emergency state
N/A	✓	N/A

Communication Examples

◇ When specifying “A” as the Gamma Table.

CTLR ‘!’ ‘1’ SP ‘U73’ SP ‘0’ CR

DLA ‘@’ ‘1’ SP ‘0’ CR

◇ When requesting current Gamma Table setting (if Gamma Table is set to “B”)

CTLR ‘?’ ‘1’ SP ‘U73’ CR

DLA ‘@’ ‘1’ SP ‘0’ SP ‘1’ CR

10.23. Lamp Power	:	'U7E' (55H 37H 47H)
-------------------	---	---------------------

Definition : Adjusts the lamp power

Parameter type : Special Parameter (7.3.4 Lamp Power Parameter.)

Response time : 3 seconds

Conditions :

Operation state

Standby state	Power on State	Cool-down state Emergency Cool-down state Emergency state
N/A	✓	N/A

Communication Examples

◇ When setting the Lamp Power to 86%

CTLR '!' '1' SP 'U7E' SP '5' CR

DLA '@' '1' SP '0' CR

◇ When requesting current Lamp Power status (if the Lamp Power is set to 97%)

CTLR '?' '1' SP 'U7E' CR

DLA '@' '1' SP '0' SP '1' CR

10.24. Input Level : 'U82' (55H 38H 32H)
--

Definition : Sets the input level of source signal

Parameter type : Special Parameter (Refer to 7.3.5 Input Level Parameter.)

Response time : 3 seconds

Conditions :

Operation state

Standby state	Power on State	Cool-down state Emergency Cool-down state Emergency state
N/A	✓	N/A

Communication Examples

◇ When specifying "Standard" as the Input Level.

CTLR '!' '1' SP 'U82' SP '0' CR

DLA '@' '1' SP '0' CR

◇ When requesting current Input level (if Input Level is set to "Enhanced")

CTLR '?' '1' SP 'U82' CR

DLA '@' '1' SP '0' SP '1' CR

10.25. Display Mode	:	'U8A' (55H 38H 41H)
---------------------	---	---------------------

Definition : Selects the Display Mode

Parameter type : Special Parameter (Refer to 7.3.6 Display Mode Parameter.)

Response time : 3 seconds

Conditions :

Operation state

Standby state	Power on State	Cool-down state Emergency Cool-down state Emergency state
N/A	✓	N/A

Communication Examples

◇ When specifying two windows ("Double") as the Display Mode

CTLR '!' '1' SP 'U8A' SP '2' CR

DLA '@' '1' SP '0' CR

◇ When requesting current Display mode status (if Display Mode is set to "Single")

CTLR '?' '1' SP 'U8A' CR

DLA '@' '1' SP '0' SP '1' CR

10.26. Message Display : 'U8C' (55H 38H 43H)
--

Definition : Controls the Message Display

Parameter type : ON/OFF

Response time : 3 seconds

Conditions :

Operation state

Standby state	Power on State	Cool-down state Emergency Cool-down state Emergency state
N/A	✓	N/A

Communication Examples

◇ When turning the Message Display ON

CTLR '!' '1' SP 'U8C' SP '1' CR

DLA '@' '1' SP '0' CR

◇ When requesting the current Message Display status (If the Message Display is set to OFF)

CTLR '?' '1' SP 'U8C' CR

DLA '@' '1' SP '0' SP '0' CR

10.27. Test Pattern : 'U8D' (55H 38H 44H)

Definition : Sets the test pattern

Parameter type : Special Parameter (Refer to 7.3.7 Test Pattern Parameter.)

Response time : 3 seconds

Conditions :

Operation state

Standby state	Power on State	Cool-down state Emergency Cool-down state Emergency state
N/A	✓	N/A

Communication Examples

◇ When selecting "Crosshatch" as the Test Pattern.

CTLR '!' '1' SP 'U8D' SP '3' CR

DLA '@' '1' SP '0' CR

◇ When requesting the current Test Pattern status (If the Test Pattern is set to OFF)

CTLR '?' '1' SP 'U8D' CR

DLA '@' '1' SP '0' SP '0' CR

10.28. Operation State : 'UA0' (55H 41H 30H)
--

Definition : Requests current operation state

Parameter type : Special Parameter (7.3.8 Operation State Parameter.)

Response time : 3 seconds

Conditions : Query only

Operation state

Standby state	Power on State	Cool-down state Emergency Cool-down state Emergency state
✓	✓	✓

When the POWER OFF command is received in the Power on State, the Projector first enters the Cool-Down state, then automatically enters the Standby state. (For information on each operation state, refer to 9. Projector Operation States.)

Communication Examples

◇ When requesting the current operation state (if the Projector is in the standby state)

CTLR ' ? ' ' 1 ' SP ' UA0 ' CR

DLA '@ ' ' 1 ' SP ' 0 ' SP ' 0 ' CR

10.29. Model Status : 'UA1' (55H 41H 31H)

Definition : Obtains the model name

Parameter Type : (*)

Response Time : 3 seconds

Conditions: Query only

Operation State

Standby state	Power on State	Cool-down state Emergency Cool-down state Emergency state
✓	✓	✓

Data Format

◇ Requesting the current model status

'?' '1' SP 'UA1' CR

(*) Parameter : None

◇ Tally (Response) data format to query

'@' '1' SP Normal Termination Status SP Parameter CR

(*) Parameter :

Indicates the model name and software version information. The parameter type is ASCII character set. (12 Byte)

Communication Examples

◇ When requesting the current model status (if the software (Ramdisk) version is 12)

CTLR '?' '1' SP 'UA1' CR

DLA '@' '1' SP '0' SP '4KPJ1--00012' CR

10.30. Temperature : 'UA2' (55H 41H 32H)

Definition : Obtains the temperature information

Parameter type : (*)

Response time : 3 seconds

Conditions : Query only

Operation state

Standby state	Power on State	Cool-down state Emergency Cool-down state Emergency state
N/A	✓	N/A

Data Format

◇ Requesting the current temperature

'?' '1' SP 'UA2' CR

(*) Parameter : None

◇ Tally (Response) data format to query

'@' '1' SP Normal Termination Status SP Parameter 1 SP Parameter 2 SP Parameter 3 SP Parameter 4
CR

(*) Parameter :

Each parameters indicates the Temperature information. The parameter type is "numeric value" (1 Byte)

Parameter 1: N/A

Parameter 2: Temp 1

Parameter 3: Temp 2

Parameter 4: N/A

Communication Examples

◇ When requesting the current temperature (if the temperatures are as follows. Temp 1: 20°C, Temp 2: 35°C)

CTLR ' ? ' ' 1 ' SP ' UA2 ' CR

DLA '@' ' 1 ' SP ' 0 ' SP ' 00 ' SP ' 14 ' SP ' 23 ' SP ' 00 ' CR

10.31. Lens Shift Status : 'UA4' (55H 41H 34H)

Definition : Obtains the lens shift limit information

Parameter type : (*)

Response time : 3 seconds

Conditions : Query only

Operation state

Standby state	Power on State	Cool-down state Emergency Cool-down state Emergency state
N/A	✓	N/A

Data Format

◇ Requesting the current lens shift limit information

'?' '1' SP 'UA4' CR

(*) Parameter: None

◇ Tally (Response) data format to query

'@' '1' SP Normal Termination Status SP Parameter CR

(*) Parameter:

Indicates the each lens shift status. The parameter type is "numeric value" (1 Byte)

1st bit (LSB) : Left(0: OK, 1: NG)
 2nd bit : Right(0: OK, 1: NG)
 3rd bit : Up(0: OK, 1: NG)
 4th bit : Down(0: OK, 1: NG)
 5-8 bit : Invalid

Communication Examples

◇ When requesting the current lens shift limit information(if the Right is NG and others are OK)

CTLR '?' '1' SP 'UA4' CR

DLA '@' '1' SP '0' SP '02' CR

10.32. Latest Error : 'UA5' (55H 41H 35H)

Definition : Obtains the latest error number

Parameter type : Special Parameter (7.3.9 Error Number.)

Response time : 3 seconds

Conditions : Query only

Operation state

Standby state	Power on State	Cool-down state Emergency Cool-down state Emergency state
✓	✓	✓

Communication Examples

◇ When requesting the latest error number (If the Latest Error number is "15" (Lamp cover opened))

CTLR ' ? ' ' 1 ' SP ' UA5 ' CR

DLA ' @ ' ' 1 ' SP ' 0 ' SP ' 15 ' CR

10.33. DVI-1 Horz. Resolution : 'UB0' (55H 42H 30H)

Definition : Obtains the current Horizontal Resolution of DVI-1

Parameter type : Numeric

Response time : 3 seconds

Conditions : Query only

Operation state

Standby state	Power on State	Cool-down state Emergency Cool-down state Emergency state
N/A	✓	N/A

Communication Examples

◇ When requesting the current Horizontal Resolution of DVI-1 (If the Horizontal Resolution of DVI-1 is 4096 (Decimal))

CTLR '?' '1' SP 'UB0' CR

DLA '@' '1' SP '0' SP '1000' CR

10.34. DVI-1 Vert. Resolution : 'UB1' (55H 42H 31H)

Definition : Obtains the current Vertical Resolution of DVI-1

Parameter type : Numeric

Response time : 3 seconds

Conditions : Query only

Operation state

Standby state	Power on State	Cool-down state Emergency Cool-down state Emergency state
N/A	✓	N/A

Communication Examples

◇ When requesting the current Vertical Resolution of DV-1 (If the Vertical Resolution of DV-1 is 2400 (Decimal))

CTLR '?' '1' SP 'UB1' CR

DLA '@' '1' SP '0' SP '0960' CR

10.35. DVI-2 Horz. Resolution : 'UB2' (55H 42H 32H)

Definition : Obtains the current Horizontal Resolution DVI-2

Parameter type : Numeric

Response time : 3 seconds

Conditions : Query only

Operation state

Standby state	Power on State	Cool-down state Emergency Cool-down state Emergency state
N/A	✓	N/A

Communication Examples

◇ When requesting the current Horizontal Resolution of DVI-2 (If the Horizontal Resolution of DVI-2 is 2048 (Decimal)

CTLR '?' '1' SP 'UB2' CR

DLA '@' '1' SP '0' SP '0800' CR

10.36. DVI-2 Vert. Resolution : 'UB3' (55H 42H 33H)

Definition : Obtains the current Vertical Resolution of DVI-2

Parameter type : Numeric

Response time : 3 seconds

Conditions : Query only

Operation state

Standby state	Power on State	Cool-down state Emergency Cool-down state Emergency state
N/A	✓	N/A

Communication Examples

◇ When requesting the current Vertical Resolution of DVI-2 (If the current Vertical Resolution of DVI-2 is 2400 (Decimal))

CTLR '?' '1' SP 'UB3' CR

DLA '@' '1' SP '0' SP '0960' CR

10.37. DVI-3 Horz. Resolution : 'UB4' (55H 42H 34H)

Definition : Obtains the current Horizontal Resolution of DVI-3

Parameter type : Numeric

Response time : 3 seconds

Conditions : Query only

Operation state

Standby state	Power on State	Cool-down state Emergency Cool-down state Emergency state
N/A	✓	N/A

Communication Examples

◇ When requesting the current Horizontal Resolution of DVI-3 (If the current Horizontal Resolution of DVI3 is 2048 (Decimal))

CTLR '? '1' SP 'UB4' CR

DLA '@ '1' SP '0' SP '0800' CR

10.38. DVI-3 Vert. Resolution : 'UB5' (55H 42H 35H)

Definition : Obtains the current Vertical Resolution of DVI-3

Parameter type : Numeric

Response time : 3 seconds

Conditions : Query only

Operation state

Standby state	Power on State	Cool-down state Emergency Cool-down state Emergency state
N/A	✓	N/A

Communication Examples

◇ When requesting the current Vertical Resolution of DVI-3 (If the current Vertical Resolution of DVI-3 is 1024 (Decimal))

CTLR '?' '1' SP 'UB5' CR

DLA '@' '1' SP '0' SP '0400' CR

10.39. DVI-4 Horz. Resolution : 'UB6' (55H 42H 36H)

Definition : Obtains the current Horizontal Resolution of DVI-4

Parameter type : Numeric

Response time : 3 seconds

Conditions : Query only

Operation state

Standby state	Power on State	Cool-down state Emergency Cool-down state Emergency state
N/A	✓	N/A

Communication Examples

◇ When requesting the current Horizontal Resolution of DVI-4 (If the current Horizontal Resolution is 2048 (Decimal))

CTLR '?' '1' SP 'UB6' CR

DLA '@' '1' SP '0' SP '0800' CR

10.40. DVI-4 Vert. Resolution : 'UB7' (55H 42H 37H)

Definition : Obtains the Vertical Resolution of DVI-4

Parameter type : Numeric

Response time : 3 seconds

Conditions : Query only

Operation state

Standby state	Power on State	Cool-down state Emergency Cool-down state Emergency state
N/A	✓	N/A

Communication Examples

◇ When requesting the current Vertical Resolution of DVI-4 (If the current Vertical Resolution is 1024 (Decimal))

CTLR '? '1' SP 'UB7' CR

DLA '@ '1' SP '0' SP '0400' CR

10.41. DVI-1 Frame Rate : 'UB8' (55H 42H 38H)

Definition : Obtains the Vertical Frequency of DVI-1

Parameter type : Numeric

Response time : 3 seconds

Conditions : Query only

Operation state

Standby state	Power on State	Cool-down state Emergency Cool-down state Emergency state
N/A	✓	N/A

(*) Value of the Parameter is hundredfold of the actual rate.

Communication Examples

◇ When requesting the current Vertical Frequency of DVI-1 (If the Vertical Frequency of DVI-1 is 60.00Hz)

CTLR '? '1' SP 'UB8' CR

DLA '@' '1' SP '0' SP '1770' CR

10.42. DVI-2 Frame Rate : 'UB9' (55H 42H 39H)

Definition : Obtains the Vertical Frequency of DVI-2

Parameter type : Numeric

Response time : 3 seconds

Conditions : Query only

Operation state

Standby state	Power on State	Cool-down state Emergency Cool-down state Emergency state
N/A	✓	N/A

(*) Value of the Parameter is hundredfold of the actual rate.

Communication Examples

◇ When requesting the current Vertical Frequency of DVI-2 (If the Vertical Frequency of DVI-2 is 50.00Hz)

CTLR ' ? ' ' 1 ' SP ' UB9 ' CR

DLA '@ ' ' 1 ' SP ' 0 ' SP ' 1388 ' CR

10.43. DVI-3 Frame Rate : 'UBA' (55H 42H 41H)

Definition : Obtains the Vertical Frequency of DVI-3

Parameter type : Numeric

Response time : 3 seconds

Conditions : Query only

Operation state

Standby state	Power on State	Cool-down state Emergency Cool-down state Emergency state
N/A	✓	N/A

(*Value of the Parameter is hundredfold of the actual rate.

Communication Examples

◇ When requesting the Vertical Frequency of DVI-3 (If the Vertical Frequency of DVI-3 is 48.00Hz)

CTLR ' ? ' ' 1 ' SP ' UBA ' CR

DLA '@ ' ' 1 ' SP ' 0 ' SP ' 12C0 ' CR

10.44. DVI-4 Frame Rate : 'UBB' (55H 42H 42H)

Definition : Obtains the Vertical Frequency of DVI-4

Parameter type : Numeric

Response time : 3 seconds

Conditions : Query only

Operation state

Standby state	Power on State	Cool-down state Emergency Cool-down state Emergency state
N/A	✓	N/A

(*) Value of the Parameter is hundredfold of the actual rate.

Communication Examples

◇ When requesting the Vertical Frequency of DVI-4 (If the Vertical Frequency of DVI-4 is 59.94Hz)

CTLR ' ? ' ' 1 ' SP ' UBB ' CR

DLA '@ ' ' 1 ' SP ' 0 ' SP ' 176A ' CR

10.45. DHCP Client	:	'UD2' (55H 44H 32H)
--------------------	---	---------------------

Definition : Selects the method to assign IP address (Static/DHCP)

Parameter type : Special Parameter (7.3.10 DHCP Client Parameter.)

Response time : 3 seconds

Conditions :

Operation state

Standby state	Power on State	Cool-down state Emergency Cool-down state Emergency state
✓	✓	✓

Communication Examples

◇ When disabling DHCP (Static address)

CTLR '!' '1' SP 'UD2' SP '1' CR

DLA '@' '1' SP '0' CR

◇ When requesting the current DHCP setting (If DHCP is enabled)

CTLR '?' '1' SP 'UD2' CR

DLA '@' '1' SP '0' SP '0' CR

10.46. IP Address : 'UD3' (55H 44H 33H)

Definition : Sets IP Address

Parameter type : (*)

Response time : 3 seconds

Conditions : When DHCP is enabled to get IP Address, only Query is available.
If a setting command is issued, Error A04 is returned.

Operation state

Standby state	Power on State	Cool-down state Emergency Cool-down state Emergency state
✓	✓	✓

Data Format

◇ When setting IP address

'!' '1' SP 'UD3' SP Parameter CR

(*) Parameter:

Specifies 3-digit x4 numbers (Decimal) with '.' (2EH) delimiter.

◇ Tally (Response) data format when requesting IP Address

'@' '1' SP Normal Termination Status SP Parameter CR

(*) Parameter:

Indicates the current IP address with '.' (2EH) delimiter.

Communication Examples

◇ When setting IP address to "192.168.0.2".

CTLR '!' '1' SP 'UD3' SP '192.168.0.2' CR

DLA '@' '1' SP '0' CR

◇ When requesting the current IP address (If the IP address is "192.168.0.10")

CTLR '?' '1' SP 'UD3' CR

DLA '@' '1' SP '0' SP '192.168.0.10' CR

10.47. Subnet Mask	:	'UD4' (55H 44H 34H)
--------------------	---	---------------------

Definition : Sets Subnet Mask

Parameter type : (*)

Response time : 3 seconds

Conditions : When DHCP is enabled to get IP Address, only Query is available.
If a setting command is issued, Error A04 is returned.

Operation state

Standby state	Power on State	Cool-down state Emergency Cool-down state Emergency state
✓	✓	✓

Data Format

◇ When setting the Subnet Mask

'!' '1' SP 'UD4' SP Parameter CR

(*) Parameter:

Specifies 3-digit x4 numbers (Decimal) with '.' (2EH) delimiter.

◇ Tally (Response) data format when requesting Subnet Mask

'@' '1' SP Normal Termination Status SP Parameter CR

(*) Parameter:

Indicates the current Subnet Mask setting with '.' (2EH) delimiter.

Communication Examples

◇ When setting Subnet Mask to "255.255.255.0".

CTLR '!' '1' SP 'UD4' SP '255.255.255.0' CR

DLA '@' '1' SP '0' CR

◇ When requesting the current Subnet Mask (If the current Subnet Mask is "255.255.255.0")

CTLR '?' '1' SP 'UD4' CR

DLA '@' '1' SP '0' SP '255.255.255.0' CR

10.48. Default Gateway : 'UD5' (55H 44H 35H)
--

Definition : Sets Default Gateway

Parameter type : (*)

Response time : 3 seconds

Conditions : When DHCP is enabled to get IP Address, only Query is available.
If a setting command is issued, Error A04 is returned.

Operation state

Standby state	Power on State	Cool-down state Emergency Cool-down state Emergency state
✓	✓	✓

Data Format

◇ Setting the Default Gateway

'!' '1' SP 'UD5' SP Parameter CR

(*) Parameter:

Specifies 3-digit x4 numbers (Decimal) with '.' (2EH) delimiter.

◇ Tally (Response) data format when requesting Default Gateway

'@' '1' SP Normal Termination Status SP Parameter CR

(*) Parameter:

Indicates the current Default Gateway setting with '.' (2EH) delimiter.

Communication Examples

◇ When setting Default Gateway to "192.168.0.255".

CTLR '! '1' SP 'UD5' SP '192.168.0.255' CR

DLA '@' '1' SP '0' CR

◇ When requesting the current Default Gateway setting (If Default Gateway is set to "192.168.0.255")

CTLR '? '1' SP 'UD5' CR

DLA '@' '1' SP '0' SP '192.168.0.255' CR

10.49. Host Name : 'UD6' (55H 44H 36H)
--

Definition : Sets Host Name

Parameter type : (*)

Response time : 3 seconds

Conditions :

Operation state

Standby state	Power on State	Cool-down state Emergency Cool-down state Emergency state
✓	✓	✓

Data Format

◇ Setting the Host Name

'!' '1' SP 'UD6' SP Parameter CR

(*) Parameter:

Specifies Host Name with letter string.

To assign Host Name on the Projector, use one byte character or hyphen ('-' (2DH))

Maximum is eight characters.

◇ Tally (Response) data format when requesting Host Name

'@' '1' SP Normal Termination Status SP Parameter CR

(*) Parameter:

Indicates the current Host Name with letter string.

Communication Examples

◇ When setting Host Name to "Hostname"

CTLR '!' '1' SP 'UD6' SP 'Hostname' CR

DLA '@' '1' SP '0' CR

◇ When requesting the current Host Name (If the current Host Name is "Hostname")

CTLR '?' '1' SP 'UD6' CR

DLA '@' '1' SP '0' SP 'Hostname' CR

10.50. MAC Address	:	'UD7' (55H 44H 37H)
--------------------	---	---------------------

Definition : Obtains the MAC address

Parameter type : (*)

Response time : 3 seconds

Conditions : Query only

Operation state

Standby state	Power on State	Cool-down state Emergency Cool-down state Emergency state
✓	✓	✓

Data Format

◇ Tally (Response) data format when requesting MAC Address

'@'
'1'
SP
Normal Termination Status
SP
Parameter
CR

(*) Parameter :

Indicates the Projector's MAC Address with ':' (3AH) delimiter.

Communication Examples

◇ When requesting the Projector's MAC Address (If the Projector's MAC Address is "01:23:45:67:89:AB")

CTLR '?' '1' SP 'UD7' CR

DLA '@' '1' SP '0' SP '01:23:45:67:89:AB' CR

10.51. E-mail	:	'UD8' (55H 44H 38H)
---------------	---	---------------------

Definition : Enables/Disables the E-mail function

Parameter type : ON/OFF

Response time : 3 seconds

Conditions :

Operation state

Standby state	Power on State	Cool-down state Emergency Cool-down state Emergency state
✓	✓	✓

Communication Examples

◇ When enabling the E-mail function

CTLR '!' '1' SP 'UD8' SP '1' CR

DLA '@' '1' SP '0' CR

◇ When requesting the current status of E-mail function (If the E-mail function is disabled)

CTLR '?' '1' SP 'UD8' CR

DLA '@' '1' SP '0' SP '0' CR

10.52. E-mail Address	:	'UD9' (55H 44H 39H)
-----------------------	---	---------------------

Definition : Specifies destination E-mail Address

Parameter type : (*)

Response time : 3 seconds

Conditions :

Operation state

Standby state	Power on State	Cool-down state Emergency Cool-down state Emergency state
✓	✓	✓

Data Format

◇ When setting

'!' '1' SP 'UD9' SP Parameter CR

(*) Parameter:

Specifies E-mail address with letter string.

To delimit user name and domain name, use '[' (5BH 5DH) instead of '@' (40H).

Character	Hex
'['	5B 5D

Use one byte character, '-' (2DH), '.' (2EH), '_' (5FH) or the separators above.

Maximum 64 characters are assignable. (Including the delimiter '@')

Therefore maximum length of Parameter is 65. (Including the delimiter '['.)

◇ Tally (Response) data format to query

'@' '1' SP Normal Termination Status SP Parameter CR

(*) Parameter:

Indicates the current E-mail address with letter string.

To delimit user name and domain name, use '(at)' (28H 61H 74H 29H) instead of '@' (40H).

Character	Hex
'(at)'	28 61 74 29

Communication Examples

◇ When specifying "username@companyname.co.jp" as destination E-mail Address.

CTLR '!' '1' SP 'UD9' SP 'username[]companyname.co.jp' CR

DLA '@' '1' SP '0'CR

◇ When requesting the current destination E-mail Address (If the E-mail address is root@companyname.co.jp)

CTLR '?' '1' SP 'UD9' CR

DLA '@' '1' SP '0' SP 'root(at)companyname.co.jp' CR

10.53. SMTP Server Address : 'UDA' (55H 44H 41H)

Definition : Specifies the SMTP Server Address

Parameter type : (*)

Response time : 3 seconds

Conditions :

Operation state

Standby state	Power on State	Cool-down state Emergency Cool-down state Emergency state
✓	✓	✓

Data Format

◇ Setting data format

'!' '1' SP 'UDA' SP Parameter CR

(*) Parameter:

Specifies the SMTP Server IP Address for sending E-mail.

Specifies 3-digit x4 numbers (Decimal) with '.' (2EH) delimiter.

◇ Tally (Response) data format to query

'@' '1' SP Normal Termination Status SP Parameter CR

(*) Parameter:

Indicates the current setting of SMTP Server IP address with '.' (2EH) delimiter.

Communication Examples

◇ When specifying "192.168.0.2" as SMTP server address

CTLR '!' '1' SP 'UDA' SP '192.168.0.2' CR

DLA '@' '1' SP '0' CR

◇ When requesting the current SMTP server IP address (If the address is "192.168.0.10")

CTLR '?' '1' SP 'UDA' CR

DLA '@' '1' SP '0' SP '192.168.0.10' CR

10.54. Network Restart : 'UDC' (55H 44H 43H)
--

Definition : Restarts the Network

Parameter type : None

Response time : 30 seconds

Conditions : No query

Operation state

Standby state	Power on State	Cool-down state Emergency Cool-down state Emergency state
✓	✓	✓

Data Format

◇When Setting

'!
'1'
SP
'UDC'
SP
Parameter
CR

(*) Parameter:

The character '0'(30H) is only available.

Communication Examples

CTLR '!' '1' SP 'UDC' SP '0' CR

DLA

'@' '1' SP '0' CR

10.55. E-mail Sender	:	'UDD' (55H 44H 44H)
----------------------	---	---------------------

Definition : Specifies Sender E-mail Address

Parameter type : (*)

Response time : 3 seconds

Conditions :

Operation state

Standby state	Power on State	Cool-down state Emergency Cool-down state Emergency state
✓	✓	✓

Data Format

◇ When setting

'!' '1' SP 'UDD' SP Parameter CR

(*) Parameter:

Specifies E-mail address with letter string.

To delimit user name and domain name, use '[' (5BH 5DH) instead of '@' (40H).

Character	Hex
'['	5B 5D

Use one byte character, '-' (2DH), '.' (2EH), '_' (5FH) or the separators above.

Maximum 64 characters are assignable. (Including the delimiter '@')

Therefore maximum length of Parameter is 65. (Including the delimiter '['.)

◇ Tally (Response) data format to query

'@' '1' SP Normal Termination Status SP Parameter CR

(*) Parameter:

Indicates the current E-mail address with letter string.

To delimit user name and domain name, use '(at)' (28H 61H 74H 29H) instead of '@' (40H).

Character	Hex
'(at)'	28 61 74 29

Communication Examples

◇ When specifying "username@companyname.co.jp" as destination E-mail Address.

CTLR '!' '1' SP 'UDD' SP 'username[companyname.co.jp' CR

DLA '@' '1' SP '0'CR

◇ When requesting the current destination E-mail Address (If the E-mail address is root@companyname.co.jp)

CTLR '?' '1' SP 'UDD' CR

DLA '@' '1' SP '0' SP 'root(at)companyname.co.jp' CR

10.56. Conver. H Red + : 'UE0' (55H 45H 30H)
--

Definition : Adjusts the Horizontal R panel position (+)

Parameter type : ON/OFF

Response time : 3 seconds

Conditions : No query

Operation state

Standby state	Power on State	Cool-down state Emergency Cool-down state Emergency state
N/A	✓	N/A

Communication Examples

◇ Be sure to transmit the STOP (OFF) command after transmitting the START (ON) command.

CTLR '!' '1' SP 'UE0' SP '1' CR

DLA '@' '1' SP '0' CR

CTLR '!' '1' SP 'UE0' SP '0' CR

DLA '@' '1' SP '0' CR

10.57. Conver. H Red - : 'UE1' (55H 45H 31H)
--

Definition : Adjusts the Horizontal R panel position (-)

Parameter type : ON/OFF

Response time : 3 seconds

Conditions : No query

Operation state

Standby state	Power on State	Cool-down state Emergency Cool-down state Emergency state
N/A	✓	N/A

Communication Examples

◇ Be sure to transmit the STOP (OFF) command after transmitting the START (ON) command.

CTLR '!' '1' SP 'UE1' SP '1' CR

DLA '@' '1' SP '0' CR

CTLR '!' '1' SP 'UE1' SP '0' CR

DLA '@' '1' SP '0' CR

10.58. Conver. VR Red + : 'UE2' (55H 45H 32H)

Definition : Adjusts the Horizontal R panel position (+)

Parameter type : ON/OFF

Response time : 3 seconds

Conditions : No query

Operation state

Standby state	Power on State	Cool-down state Emergency Cool-down state Emergency state
N/A	✓	N/A

Communication Examples

◇ Be sure to transmit the STOP (OFF) command after transmitting the START (ON) command.

CTLR '!' '1' SP 'UE2' SP '1' CR

DLA '@' '1' SP '0' CR

CTLR '!' '1' SP 'UE2' SP '0' CR

DLA '@' '1' SP '0' CR

10.59. Conver. VR Red - : 'UE3' (55H 45H 33H)

Definition : Adjusts the Horizontal R panel position (-)

Parameter type : ON/OFF

Response time : 3 seconds

Conditions : No query

Operation state

Standby state	Power on State	Cool-down state Emergency Cool-down state Emergency state
N/A	✓	N/A

Communication Examples

◇ Be sure to transmit the STOP (OFF) command after transmitting the START (ON) command.

CTLR '!' '1' SP 'UE3' SP '1' CR

DLA '@' '1' SP '0' CR

CTLR '!' '1' SP 'UE3' SP '0' CR

DLA '@' '1' SP '0' CR

10.60. Conver. VL Red + : 'UE4' (55H 45H 34H)

Definition : Adjusts the Vertical left R panel position (+)

Parameter type : ON/OFF

Response time : 3 seconds

Conditions : No query

Operation state

Standby state	Power on State	Cool-down state Emergency Cool-down state Emergency state
N/A	✓	N/A

Communication Examples

◇ Be sure to transmit the STOP (OFF) command after transmitting the START (ON) command.

CTLR '!' '1' SP 'UE4' SP '1' CR

DLA '@' '1' SP '0' CR

CTLR '!' '1' SP 'UE4' SP '0' CR

DLA '@' '1' SP '0' CR

10.61. Conver. VL Red - : 'UE5' (55H 45H 35H)

Definition : Adjusts the Vertical left R panel position (-)

Parameter type : ON/OFF

Response time : 3 seconds

Conditions : No query

Operation state

Standby state	Power on State	Cool-down state Emergency Cool-down state Emergency state
N/A	✓	N/A

Communication Examples

◇ Be sure to transmit the STOP (OFF) command after transmitting the START (ON) command.

CTLR '!' '1' SP 'UE5' SP '1' CR

DLA '@' '1' SP '0' CR

CTLR '!' '1' SP 'UE5' SP '0' CR

DLA '@' '1' SP '0' CR

10.62. Conver. H Blue + : 'UE6' (55H 45H 36H)

Definition : Adjusts the Horizontal B panel position (+)

Parameter type : ON/OFF

Response time : 3 seconds

Conditions : No query

Operation state

Standby state	Power on State	Cool-down state Emergency Cool-down state Emergency state
N/A	✓	N/A

Communication Examples

◇ Be sure to transmit the STOP (OFF) command after transmitting the START (ON) command.

CTLR '!' '1' SP 'UE6' SP '1' CR

DLA '@' '1' SP '0' CR

CTLR '!' '1' SP 'UE6' SP '0' CR

DLA '@' '1' SP '0' CR

10.63. Conver. H Blue - : 'UE7' (55H 45H 37H)

Definition : Adjusts the Horizontal B panel position (-)

Parameter type : ON/OFF

Response time : 3 seconds

Conditions : No query

Operation state

Standby state	Power on State	Cool-down state Emergency Cool-down state Emergency state
N/A	✓	N/A

Communication Examples

◇ Be sure to transmit the STOP (OFF) command after transmitting the START (ON) command.

CTLR '!' '1' SP 'UE7' SP '1' CR

DLA '@' '1' SP '0' CR

CTLR '!' '1' SP 'UE7' SP '0' CR

DLA '@' '1' SP '0' CR

10.64. Conver. VR Blue + : 'UE8' (55H 45H 38H)

Definition : Adjusts the vertical right B panel position (+)

Parameter type : ON/OFF

Response time : 3 seconds

Conditions : No query

Operation state

Standby state	Power on State	Cool-down state Emergency Cool-down state Emergency state
N/A	✓	N/A

Communication Examples

◇ Be sure to transmit the STOP (OFF) command after transmitting the START (ON) command.

CTLR '!' '1' SP 'UE8' SP '1' CR

DLA '@' '1' SP '0' CR

CTLR '!' '1' SP 'UE8' SP '0' CR

DLA '@' '1' SP '0' CR

10.65. Conver. VR Blue - : 'UE9' (55H 45H 39H)
--

Definition : Adjusts the vertical right B panel position (-)

Parameter type : ON/OFF

Response time : 3 seconds

Conditions : No query

Operation state

Standby state	Power on State	Cool-down state Emergency Cool-down state Emergency state
N/A	✓	N/A

Communication Examples

◇ Be sure to transmit the STOP (OFF) command after transmitting the START (ON) command.

CTLR '!' '1' SP 'UE9' SP '1' CR

DLA '@' '1' SP '0' CR

CTLR '!' '1' SP 'UE9' SP '0' CR

DLA '@' '1' SP '0' CR

10.66. Conver. VL Blue + : 'UEA' (55H 45H 41H)
--

Definition : Adjusts the Vertical left B panel position (+)

Parameter type : ON/OFF

Response time : 3 seconds

Conditions : No query

Operation state

Standby state	Power on State	Cool-down state Emergency Cool-down state Emergency state
N/A	✓	N/A

Communication Examples

◇ Be sure to transmit the STOP (OFF) command after transmitting the START (ON) command.

CTLR '!' '1' SP 'UEA' SP '1' CR

DLA '@' '1' SP '0' CR

CTLR '!' '1' SP 'UEA' SP '0' CR

DLA '@' '1' SP '0' CR

10.67. Conver. VL Blue - : 'UEB' (55H 45H 42H)
--

Definition : Adjusts the Vertical left B panel position (-)

Parameter type : ON/OFF

Response time : 3 seconds

Conditions : No query

Operation state

Standby state	Power on State	Cool-down state Emergency Cool-down state Emergency state
N/A	✓	N/A

Communication Examples

◇ Be sure to transmit the STOP (OFF) command after transmitting the START (ON) command.

CTLR '!' '1' SP 'UEB' SP '1' CR

DLA '@' '1' SP '0' CR

CTLR '!' '1' SP 'UEB' SP '0' CR

DLA '@' '1' SP '0' CR

10.68. SMTP AUTH Type : 'UF6' (55H 46H 36H)

Definition : Sets the authentication type for the outgoing mail server

Parameter Type : Special parameter (Refer to 0 SMTP AUTH Type Parameter)

Response Time : 3 seconds

Conditions :

Operation state

Standby state	Power on State	Cool-down state Emergency Cool-down state Emergency state
✓	✓	✓

Communication Examples

◇ When specifying the outgoing mail server's authentication type as "LOGIN".

CTLR '!' '1' SP 'UF6' SP '2' CR

DLA '@' '1' SP '0' CR

◇ When requesting the current setting of the outgoing mail server's authentication type (if the type is set "OFF")

CTLR '?' '1' SP 'UF6' CR

DLA '@' '1' SP '0' SP '0' CR

10.69. SMTP Server Account : 'UF7' (55H 46H 37H)
--

Definition : Sets the account name for the outgoing mail server

Parameter Type : (*)

Response Time : 3 seconds

Conditions :

Operation state

Standby state	Power on State	Cool-down state Emergency Cool-down state Emergency state
✓	✓	✓

Data Format

◇ When setting SMTP Server Account

'!' '1' SP 'UF7' SP Parameter CR

(*) Parameter:

Specify the account name for the outgoing mail server with character string.

Use one byte characters or '-' (2DH).

Maximum 31 characters are assignable.

◇ Tally (Response) data format to query.

'@' '1' SP Normal Termination Status SP Parameter CR

(*) Parameter:

Indicates the account name for the outgoing mail server.

The factory default setting of the account name is blank. When the account name is blank, '{}'(7BH 7DH) is returned as alternative character.

Communication Examples

◇ When specifying the account name for the outgoing mail server as "useraccount".

CTLR '!' '1' SP 'UF7' SP 'useraccount' CR

DLA '@' '1' SP '0' CR

◇ When requesting the current account name for the outgoing mail server (if the account is set "useraccount")

CTLR '?' '1' SP 'UF7' CR

DLA '@' '1' SP '0' SP 'useraccount' CR

10.70. SMTP Server Password : 'UF8' (55H 46H 38H)

Definition : Sets Password for the outgoing mail server

Parameter Type : (*)

Response Time : 3 seconds

Conditions : No query

Operation state

Standby state	Power on State	Cool-down state Emergency Cool-down state Emergency state
✓	✓	✓

Data Format

◇ When setting password

'!' '1' SP 'UF8' SP Parameter CR

(*) Parameter:

Specify the password for the outgoing mail server with character string.

Use one byte characters or '-' (2DH).

Maximum 31 characters are assignable.

Communication Examples

◇ When specifying the password for the outgoing mail server as "userpass".

CTLR '!' '1' SP 'UF8' SP 'userpass' CR

DLA '@' '1' SP '0'CR

10.71. SMTP Server Port : 'UF9' (55H 46H 39H)

Definition : Sets the port number of the outgoing mail server

Parameter Type : Special parameter (Refer to 7.3.12 SMTP Server Port Parameter)

Response Time : 3 seconds

Conditions :

Operation state

Standby state	Power on State	Cool-down state Emergency Cool-down state Emergency state
✓	✓	✓

Communication Examples

◇ When specifying the port number as "465".

CTLR '! '1' SP 'UF9' SP '1' CR

DLA '@' '1' SP '0' CR

◇ When requesting the current port number (if the outgoing mail server's port number is set "587")

CTLR '?' '1' SP 'UF9' CR

DLA '@' '1' SP '0' SP '2' CR

10.72. Send Test Mail	:	'UFA' (55H 46H 41H)
-----------------------	---	---------------------

Definition : Sends test mail and acquire transmission status

Parameter Type : Special parameter (query only: refer to 7.3.13 Mail Status.)

Response Time : 60 seconds

Conditions :

Operation state

Standby state	Power on State	Cool-down state Emergency Cool-down state Emergency state
✓	✓	✓

Data Format

◇ When setting

'!' '1' SP 'UFA' SP Parameter CR

(*) Parameter:

Character '0'(30H) fixed. Other characters are invalid.

◇ Tally (Response) data format to query

'@' '1' SP Normal Termination Status SP Parameter CR

(*) Parameter:

Indicates the current status of outgoing mail (mail status).

Communication Examples

◇ When sending test mail

CTLR '!' '1' SP 'UFA' SP '0' CR

DLA '@' '1' SP '0' CR

◇ When requesting the mail status (when E-Mail is in transit)

CTLR '?' '1' SP 'UFA' CR

DLA '@' '1' SP '0' SP '1' CR

10.73. Confirm	:	'N' (4EH)
----------------	---	-----------

Definition : Confirms the communication status

Parameter type : None

Response time : 3 seconds

Conditions :

Operation state

Standby state	Power on State	Cool-down state Emergency Cool-down state Emergency state
✓	✓	✓

Communication Examples

CTLR 'N' CR

DLA '@' '1' SP '0' CR

11. Appendix

11.1. External Control Command List

No.	Command	Command Number	Parameter Type	R/W	Definition
1	Hide	U00	ON / OFF	R/W	Controls video signal muting
2	Back Color	U01	Special	R/W	Controls the background color projected when Source (Area) has no signal
3	Power	U0F	ON / OFF	W	Controls the power
4	Zoom Wide	U13	ON / OFF	W	Enlarges the screen size
5	Zoom Tele	U14	ON / OFF	W	Reduces the screen size
6	Focus +	U15	ON / OFF	W	Moves the focal point forward
7	Focus -	U16	ON / OFF	W	Moves the focal point back
8	Flip Horz.	U17	ON / OFF	R/W	Reverses the image horizontally
9	Flip Vert.	U18	ON / OFF	R/W	Inverts the image vertically
10	Lamp Time	U1C	Numeric	R	Checks the lamp operating time
11	ID	U1D	Special	R/W	Sets the ID for the Projector
12	Lens Shift Left	U32	ON / OFF	W	Shifts the projection lens to the left.
13	Lens Shift Right	U33	ON / OFF	W	Shifts the projection lens to the right
14	Lens Shift Up	U34	ON / OFF	W	Shifts the projection lens upward
15	Lens Shift Down	U35	ON / OFF	W	Shifts the projection lens downward
16	Brightness Red	U55	Numeric	R/W	Adjusts the brightness (Red)
17	Brightness Green	U56	Numeric	R/W	Adjusts the brightness (Green)
18	Brightness Blue	U57	Numeric	R/W	Adjusts the brightness (Blue)
19	Contrast Red	U58	Numeric	R/W	Adjusts the contrast (Red)
20	Contrast Green	U59	Numeric	R/W	Adjusts the contrast (Green)
21	Contrast Blue	U5A	Numeric	R/W	Adjusts the contrast (Blue)
22	Gamma Table	U73	Special	R/W	Selects the gamma table
23	Lamp Power	U7E	Special	R/W	Adjusts the lamp power
24	Input Level	U82	Special	R/W	Sets the input level of source signal
25	Display Mode	U8A	Special	R/W	Selects the Display Mode
26	Message Display	U8C	ON / OFF	R/W	Controls the Message Display
27	Test Pattern	U8D	Special	R	Selects the test pattern
28	Operation State	UA0	Special	R	Requests current operation state
29	Model Status	UA1	Special	R	Obtains the model name
30	Temperature	UA2	-	R	Obtains the temperature information
31	Lens Shift Status	UA4	Special	R	Obtains the lens shift limit information
32	Latest Error	UA5	Special	R	Obtains the latest error number
33	DVI-1 Horz. Resolution	UB0	Numeric	R	Obtains the current Horizontal Resolution of DVI-1
34	DVI-1 Vert. Resolution	UB1	Numeric	R	Obtains the current Vertical Resolution of DVI-1
35	DVI-2 Horz. Resolution	UB2	Numeric	R	Obtains the current Horizontal Resolution DVI-2
36	DVI-2 Vert. Resolution	UB3	Numeric	R	Obtains the current Vertical Resolution of DVI-2
37	DVI-3 Horz. Resolution	UB4	Numeric	R	Obtains the current Horizontal Resolution of DVI-3
38	DVI-3 Vert. Resolution	UB5	Numeric	R	Obtains the current Vertical Resolution of DVI-3
39	DVI-4 Horz. Resolution	UB6	Numeric	R	Obtains the current Horizontal Resolution of DVI-4
40	DVI-4 Vert. Resolution	UB7	Numeric	R	Obtains the Vertical Resolution of DVI-4

No.	Command	Command Number	Parameter Type	R/W	Definition
41	DVI-1 Frame Rate	UB8	Numeric	R	Obtains the Vertical Frequency of DVI-1
42	DVI-2 Frame Rate	UB9	Numeric	R	Obtains the Vertical Frequency of DVI-2
43	DVI-3 Frame Rate	UBA	Numeric	R	Obtains the Vertical Frequency of DVI-3
44	DVI-4 Frame Rate	UBB	Numeric	R	Obtains the Vertical Frequency of DVI-4
45	DHCP Client	UD2	Special	R/W	Selects the method to assign IP address (Static/DHCP)
46	IP Address	UD3	Special	(*)	Sets IP Address
47	Subnet Mask	UD4	Special	(*)	Sets Subnet Mask
48	Default Gateway	UD5	Special	(*)	Sets Default Gateway
49	Host Name	UD6	Special	R/W	Sets Host Name
50	MAC Address	UD7	Special	R	Obtains the MAC address
51	E-mail	UD8	ON / OFF	R/W	Enables/Disables the E-mail function
52	E-mail Address	UD9	Special	R/W	Specifies destination E-mail Address
53	SMTP Server Address	UDA	Special	R/W	Specifies the SMTP Server Address
54	Network Restart	UDC	-	W	Restarts the Network
55	E-mail Sender	UDD	Special	R/W	Specifies destination E-mail Sender Address
56	Conver. H Red +	UE0	ON / OFF	W	Adjusts the Horizontal R panel position (+)
57	Conver. H Red -	UE1	ON / OFF	W	Adjusts the Horizontal R panel position (-)
58	Conver. VR Red +	UE2	ON / OFF	W	Adjusts the Vertical R panel position (+)
59	Conver. VR Red -	UE3	ON / OFF	W	Adjusts the Vertical R panel position (-)
60	Conver. VL Red +	UE4	ON / OFF	W	Adjusts the Vertical left R panel position (+)
61	Conver. VL Red -	UE5	ON / OFF	W	Adjusts the Vertical left R panel position (-)
62	Conver. H Blue +	UE6	ON / OFF	W	Adjusts the Horizontal B panel position (+)
63	Conver. H Blue -	UE7	ON / OFF	W	Adjusts the Horizontal B panel position (-)
64	Conver. VR Blue +	UE8	ON / OFF	W	Adjusts the vertical right B panel position (+)
65	Conver. VR Blue -	UE9	ON / OFF	W	Adjusts the vertical right B panel position (-)
66	Conver. VL Blue +	UEA	ON / OFF	W	Adjusts the Vertical left B panel position (+)
67	Conver. VL Blue -	UEB	ON / OFF	W	Adjusts the Vertical left B panel position (-)
68	SMTP AUTH Type	UF6	Special	R/W	Sets the authentication type for the outgoing mail server
69	SMTP Server Account	UF7	Special	R/W	Sets the account name for the outgoing mail server
70	SMTP Server Password	UF8	Special	W	Sets Password for the outgoing mail server.
71	SMTP Server Port	UF9	Numeric	R/W	Sets the port number of the outgoing mail server
72	Send Test Mail	UFA	Special	R/W	Sends test mail and acquire transmission status
73	Confirm	N	-	W	Confirms the communication status

(*) Differs depending on the DHCP Client (UD2) setting.

[DHCP] Read only (If Write is specified Error is returned)

[Static IP] Read / Write

11.2. Operating state Sequence

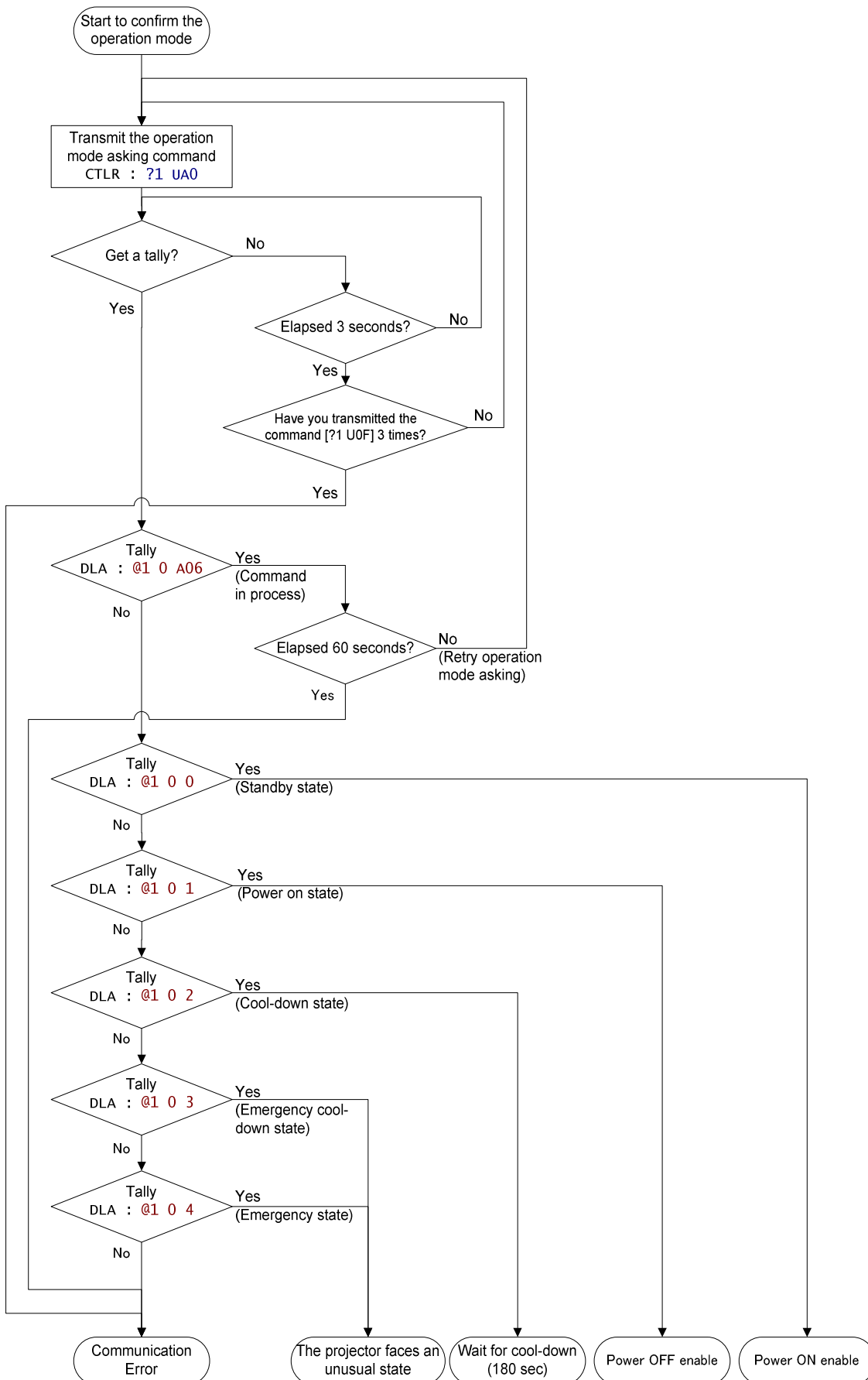


Figure 11.1 Operation State confirmation procedure

11.3. Power on Sequence

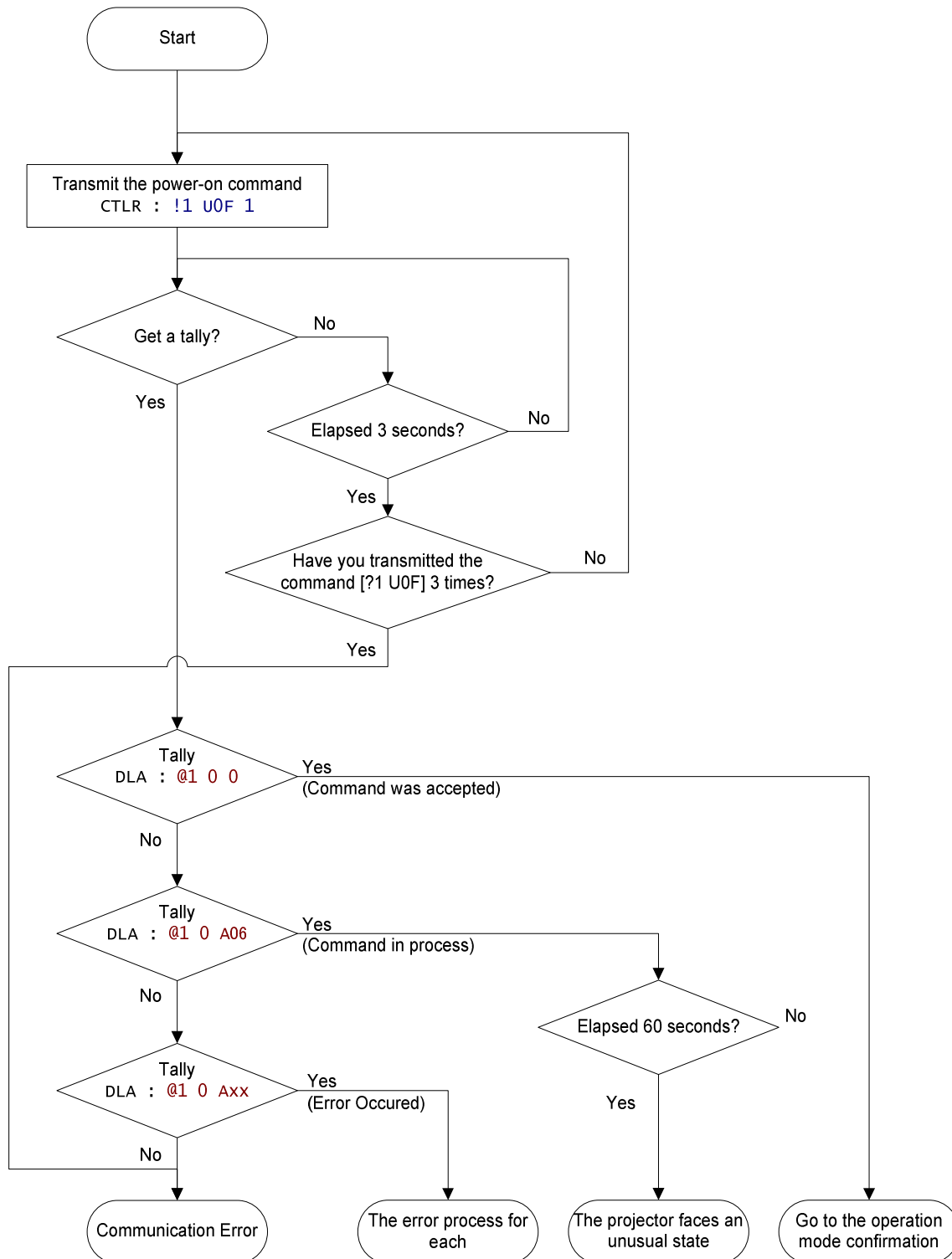


Figure 11.2 Power on Sequence

11.4. Power off Sequence

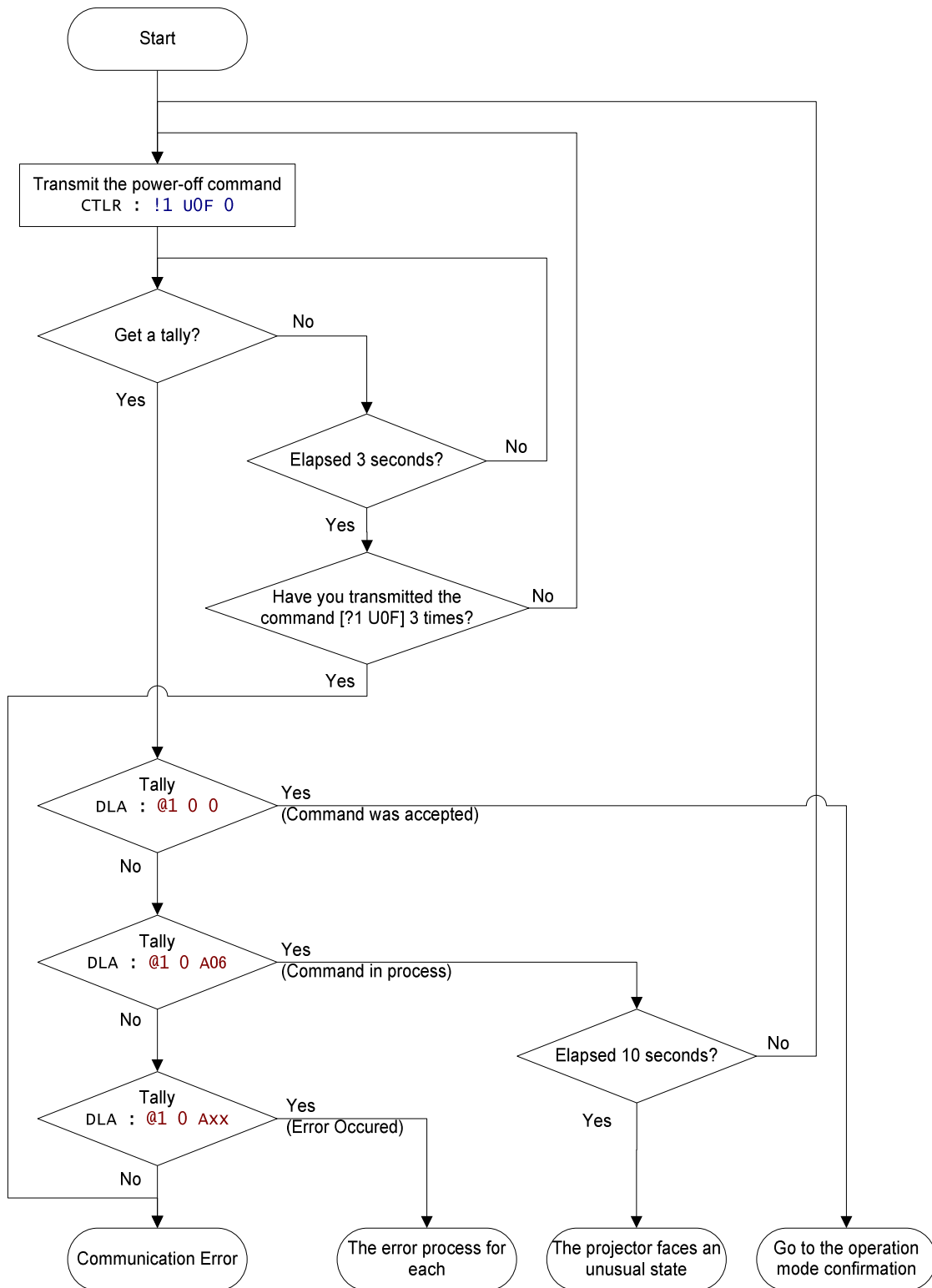


Figure 11.3 Power off Sequence

End of Specification